

# **Predicting Emergent Behavior in Cardiac Tissue: A Grand Challenge**

**Radu Grosu  
SUNY at Stony Brook**

**Joint work with**

**Ezio Bartocci, Gregory Batt, Flavio H. Fenton,  
James Glimm, Colas Le Guernic, and Scott A. Smolka**

# Excitable Cells

- **Generate action potentials** (elec. pulses) in response to **electrical stimulation**
  - **Examples:** neurons, cardiac cells, etc.
- **Local regeneration** allows electric signal propagation **without damping**
- **Building block** for electrical signaling in **brain, heart, and muscles**

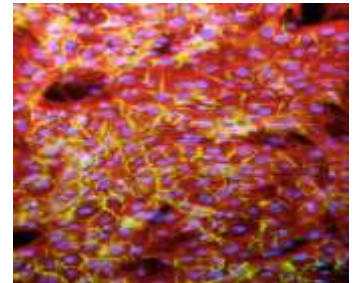


# Excitable Cells

- **Generate action potentials** (elec. pulses) in response to **electrical stimulation**
  - **Examples:** neurons, cardiac cells, etc.
- **Local regeneration** allows electric signal propagation **without damping**
- **Building block** for electrical signaling in brain, heart, and muscles



**Neurons of a squirrel**  
University College London



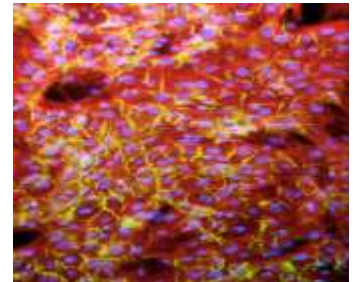
**Artificial cardiac tissue**  
University of Washington

# Excitable Cells

- **Generate action potentials** (elec. pulses) in response to **electrical stimulation**
  - **Examples:** neurons, cardiac cells, etc.
- **Local regeneration** allows electric signal propagation **without damping**
- **Building block** for electrical signaling in brain, heart, and muscles



**Neurons of a squirrel**  
University College London



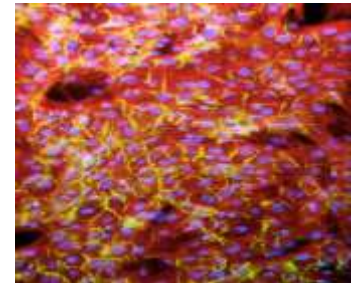
**Artificial cardiac tissue**  
University of Washington

# Excitable Cells

- **Generate action potentials** (elec. pulses) in response to **electrical stimulation**
  - **Examples:** neurons, cardiac cells, etc.
- **Local regeneration** allows electric signal propagation **without damping**
- **Building block** for electrical signaling in **brain, heart, and muscles**



**Neurons of a squirrel**  
University College London

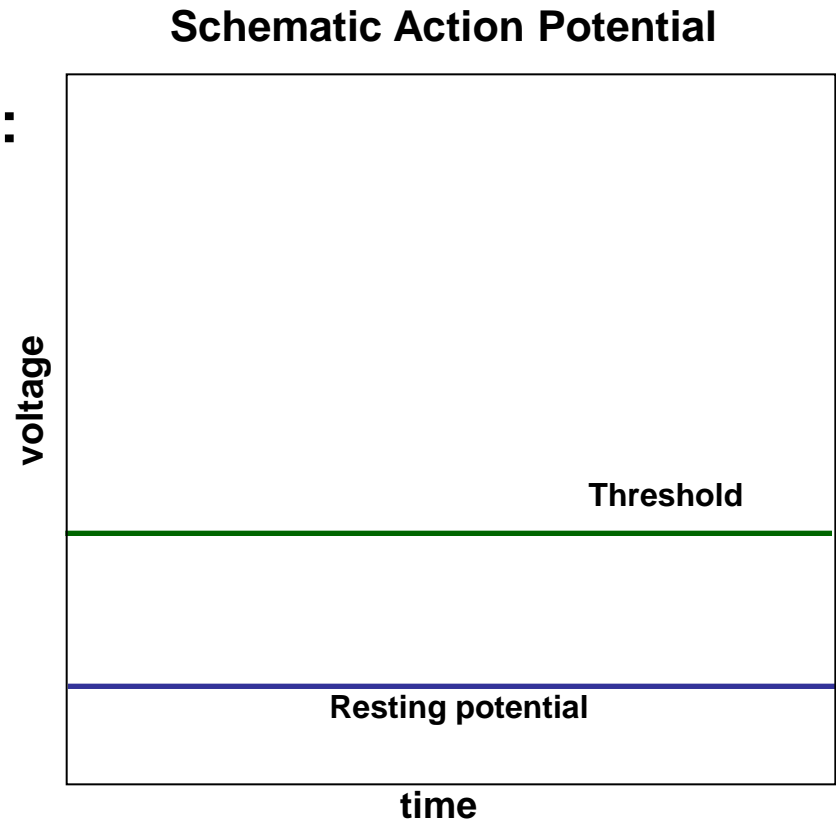


**Artificial cardiac tissue**  
University of Washington

# Single Cell Reaction: Action Potential

## Membrane's AP depends on:

- **Stimulus (voltage or current):**
  - **External / Neighboring cells**
- **Cell itself (excitable or not):**
  - **State / Parameters value**

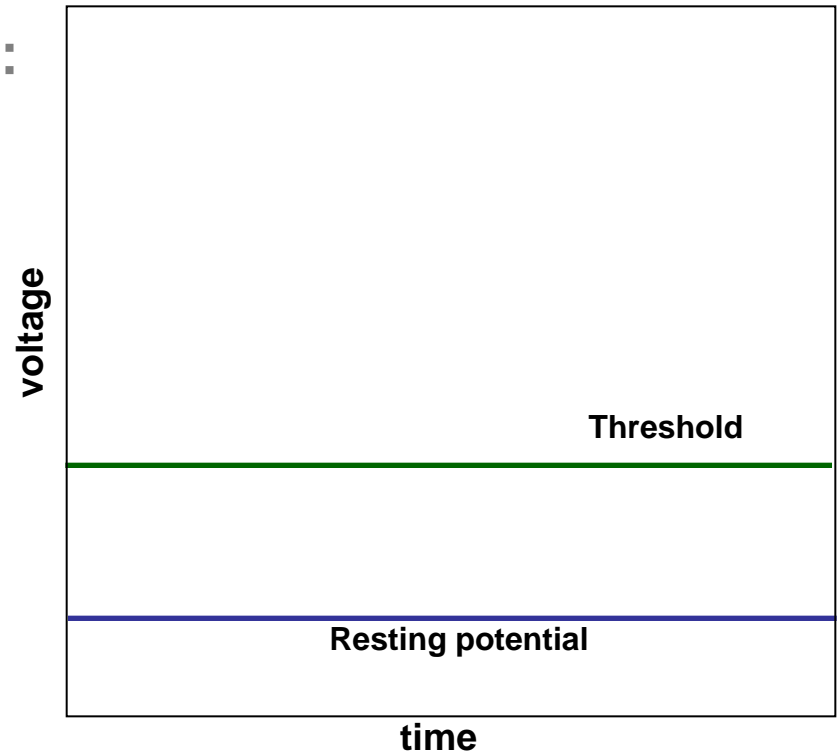


# Single Cell Reaction: Action Potential

## Membrane's AP depends on:

- **Stimulus** (voltage or current):
  - External / Neighboring cells
- **Cell itself** (excitable or not):
  - State / Parameters value

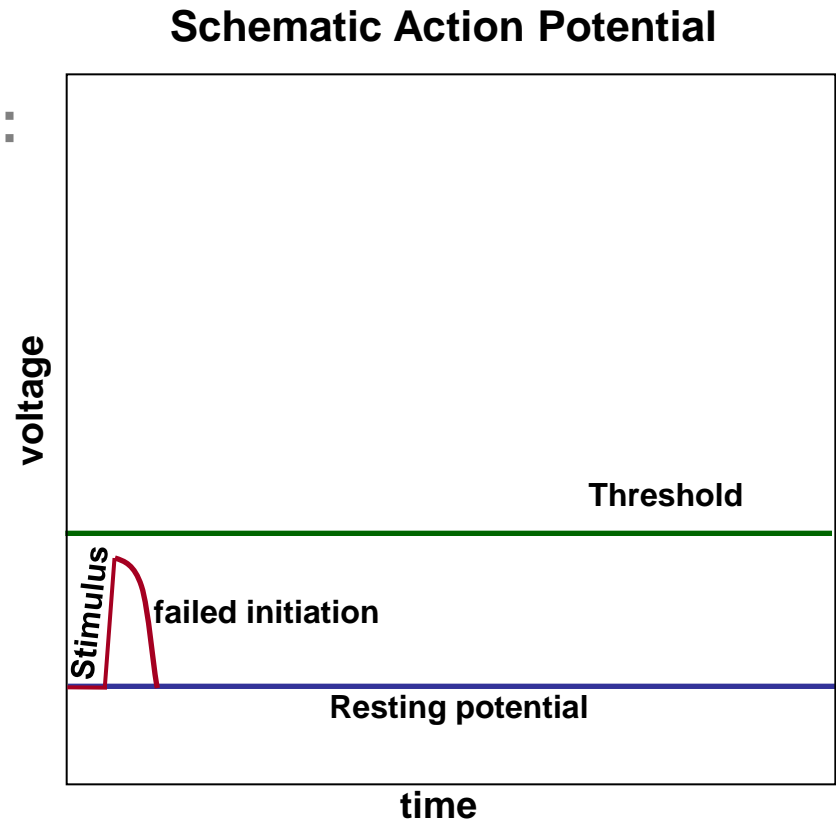
Schematic Action Potential



# Single Cell Reaction: Action Potential

## Membrane's AP depends on:

- Stimulus (voltage or current):
  - External / Neighboring cells
- Cell itself (excitable or not):
  - State / Parameters value

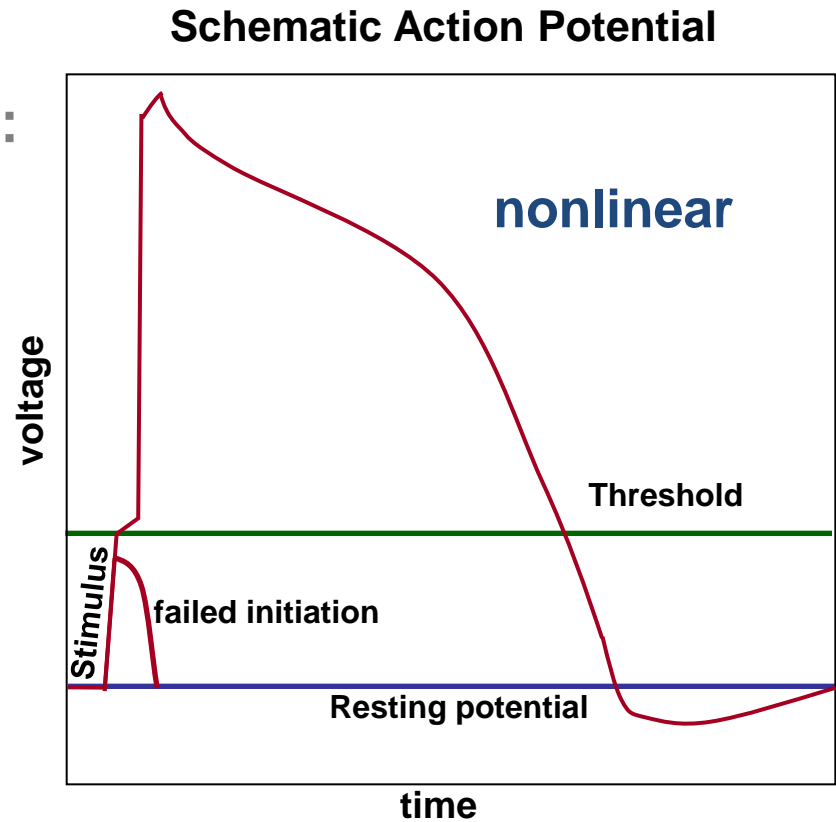




# Single Cell Reaction: Action Potential

## Membrane's AP depends on:

- Stimulus (voltage or current):
  - External / Neighboring cells
- Cell itself (excitable or not):
  - State / Parameters value



# Single Cell Reaction: Action Potential

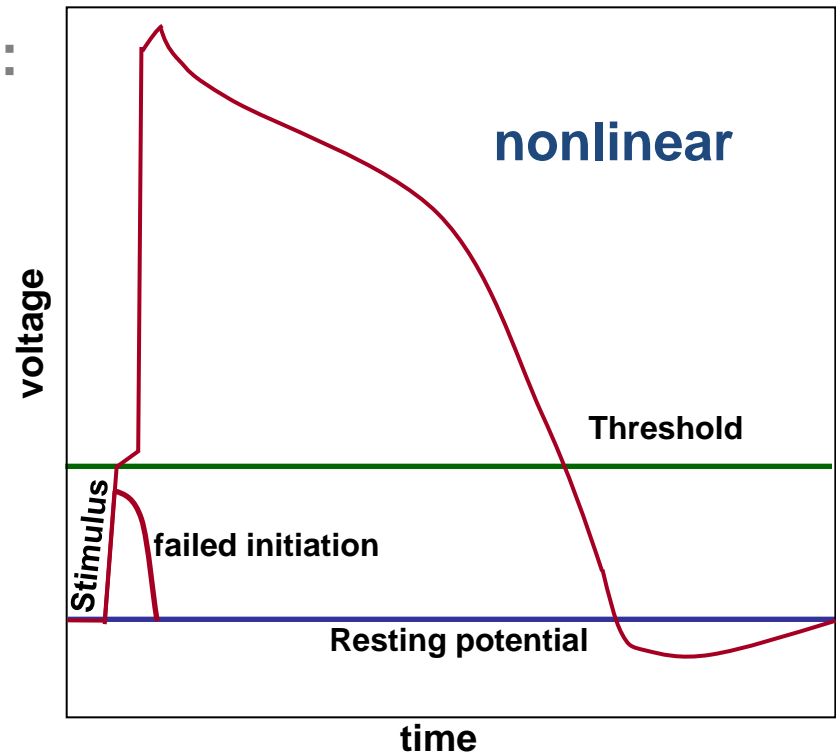
Membrane's AP depends on:

- Stimulus (voltage or current):
  - External / Neighboring cells
- Cell itself (excitable or not):
  - State / Parameters value

Tissue: Reaction / diffusion

$$\frac{\partial \mathbf{u}}{\partial t} = R(\mathbf{u}) + \nabla(D\nabla \mathbf{u})$$

Schematic Action Potential



# Single Cell Reaction: Action Potential

Membrane's AP depends on:

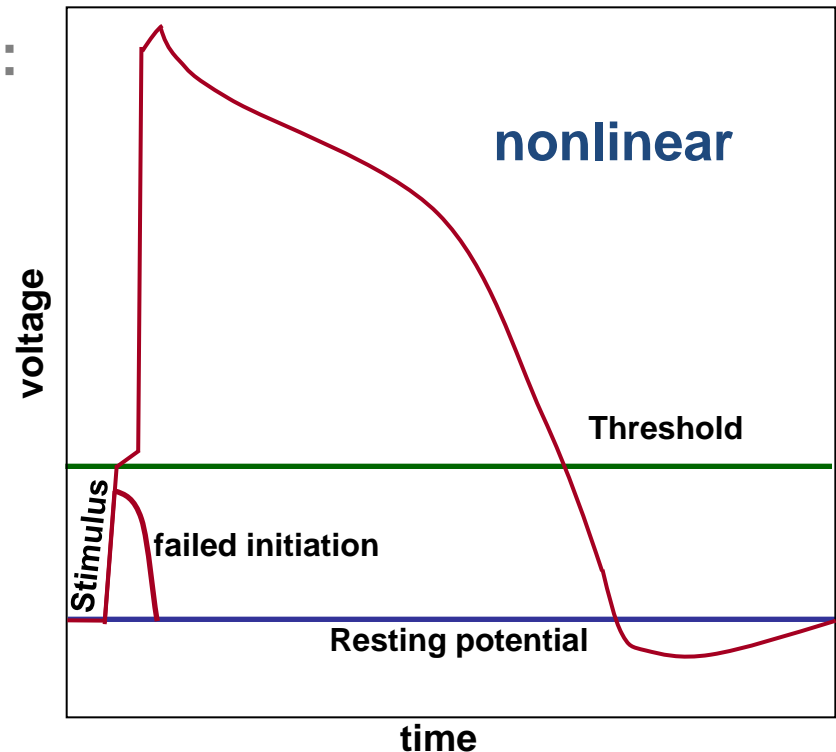
- Stimulus (voltage or current):
  - External / Neighboring cells
- Cell itself (excitable or not):
  - State / Parameters value

Tissue: Reaction / diffusion

$$\frac{\partial \mathbf{u}}{\partial t} = R(\mathbf{u}) + \nabla(D\nabla \mathbf{u})$$

Behavior  
In time

Schematic Action Potential



# Single Cell Reaction: Action Potential

Membrane's AP depends on:

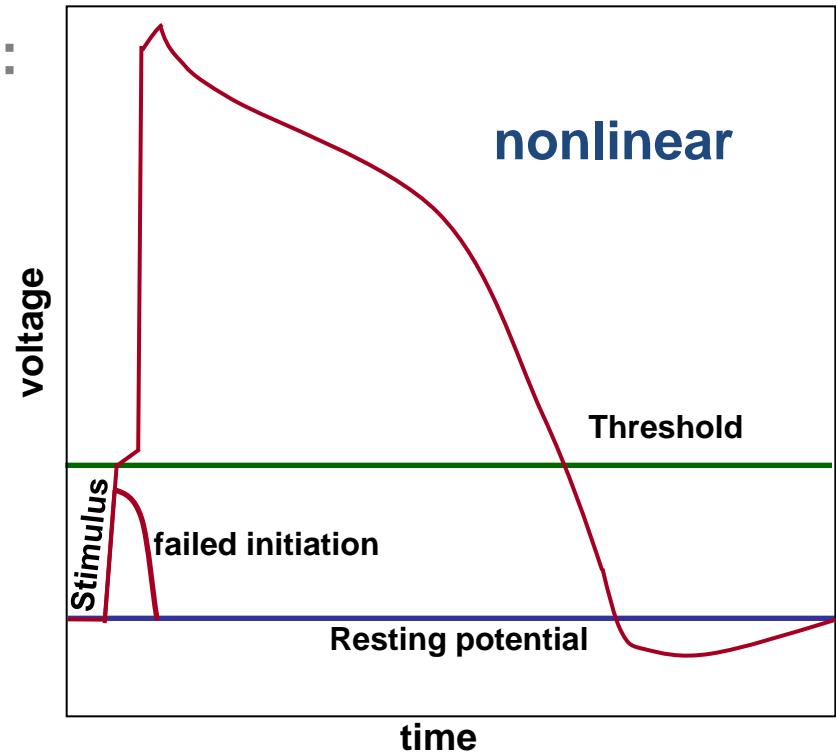
- Stimulus (voltage or current):
  - External / Neighboring cells
- Cell itself (excitable or not):
  - State / Parameters value

Tissue: Reaction / diffusion

$$\frac{\partial \mathbf{u}}{\partial t} = R(\mathbf{u}) + \nabla(D\nabla\mathbf{u})$$



Schematic Action Potential



# Single Cell Reaction: Action Potential

Membrane's AP depends on:

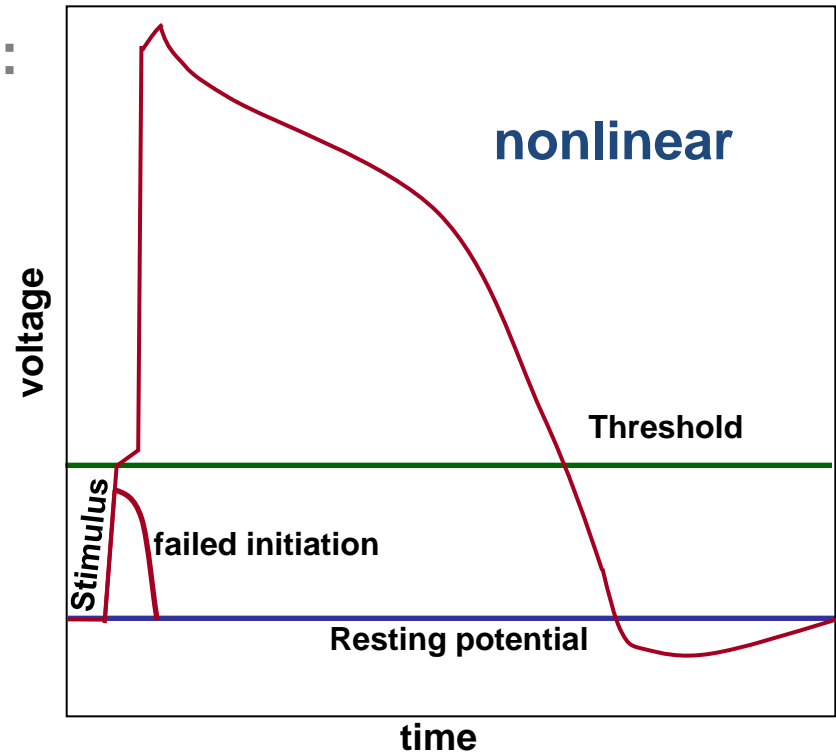
- Stimulus (voltage or current):
  - External / Neighboring cells
- Cell itself (excitable or not):
  - State / Parameters value

Tissue: Reaction / diffusion

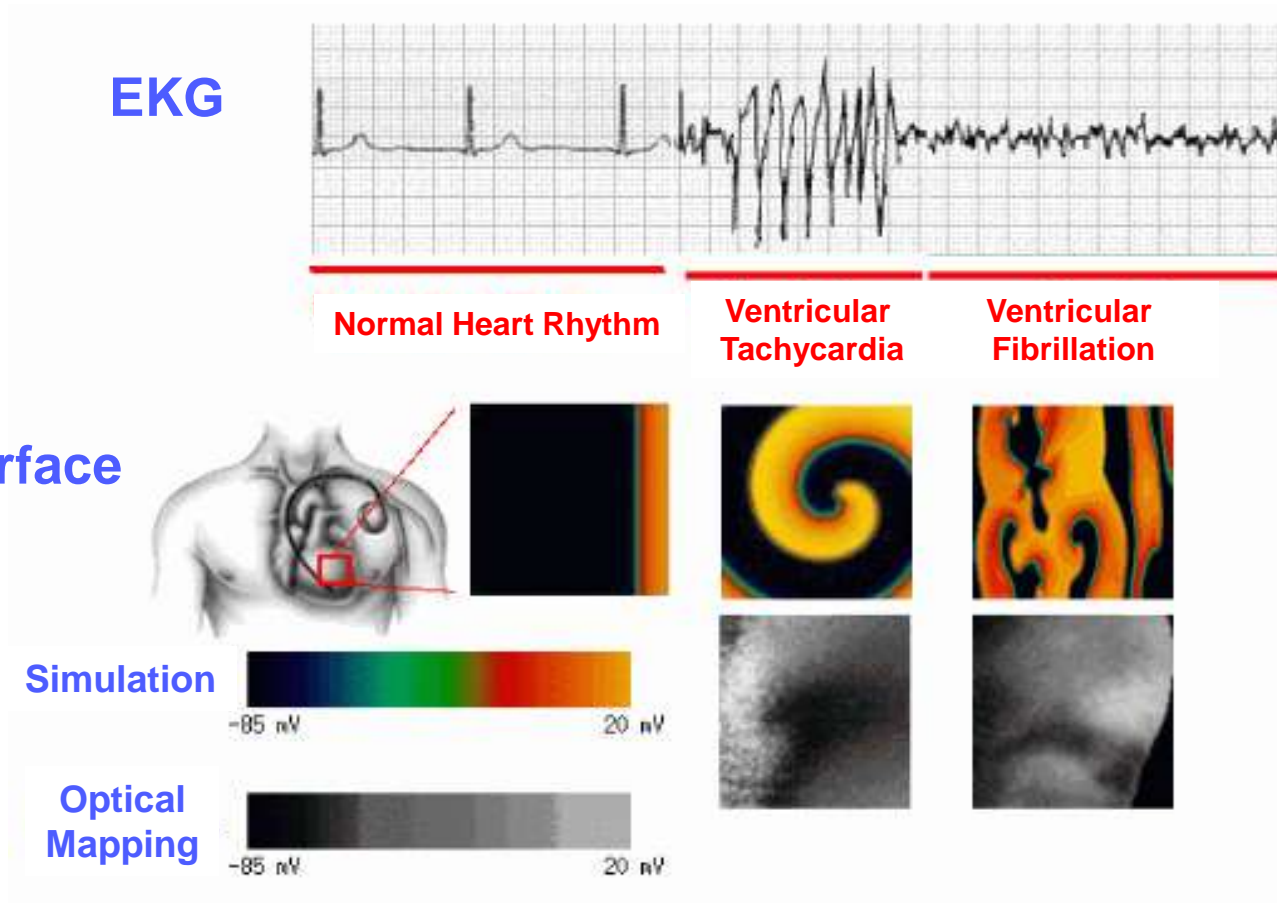
$$\frac{\partial \mathbf{u}}{\partial t} = R(\mathbf{u}) + \nabla(D\nabla \mathbf{u})$$



Schematic Action Potential

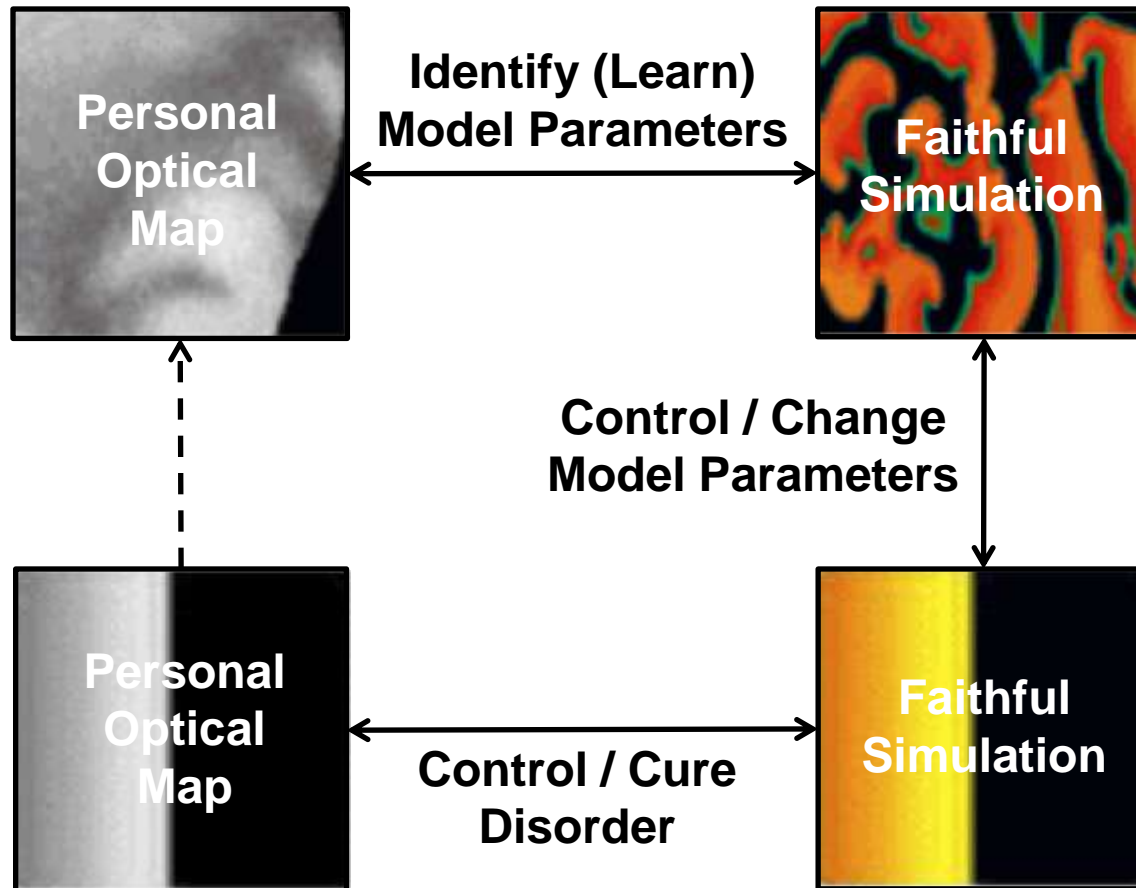


# Emergent Behavior in Cardiac Cells



**Arrhythmia afflicts more than 3 million Americans alone**

# The Grand SB-Challenge



# Human Cardiac-Cell Models

**Iyer-Mazhari-Winslow-04**

**Variables: 67**  
**Parameters: 94**

**Most Detailed Ionic Model**

- Latest experimental data
- Multi-affine ODE (MA law)



# Human Cardiac-Cell Models

## Tusscher-Noble<sup>2</sup>-Panfilov-03

Variables: 17  
Parameters: 44

## Less Detailed Ionic Model

- Recent experimental data
- Sigmoidal ODE (Luo-Rudi)

## Iyer-Mazhari-Winslow-04

Variables: 67  
Parameters: 94

## Most Detailed Ionic Model

- Latest experimental data
- Multi-affine ODE (MA law)

# Human Cardiac-Cell Models

## Orovio-Cherry-Fenton-08

Variables: 4  
Parameters: 27

## Minimal Ionic Model

- Mesoscopic behavior
- Sigmoidal ODE (Luo-Rudi)

## Tusscher-Noble<sup>2</sup>-Panfilov-03

Variables: 17  
Parameters: 44

## Less Detailed Ionic Model

- Recent experimental data
- Sigmoidal ODE (Luo-Rudi)

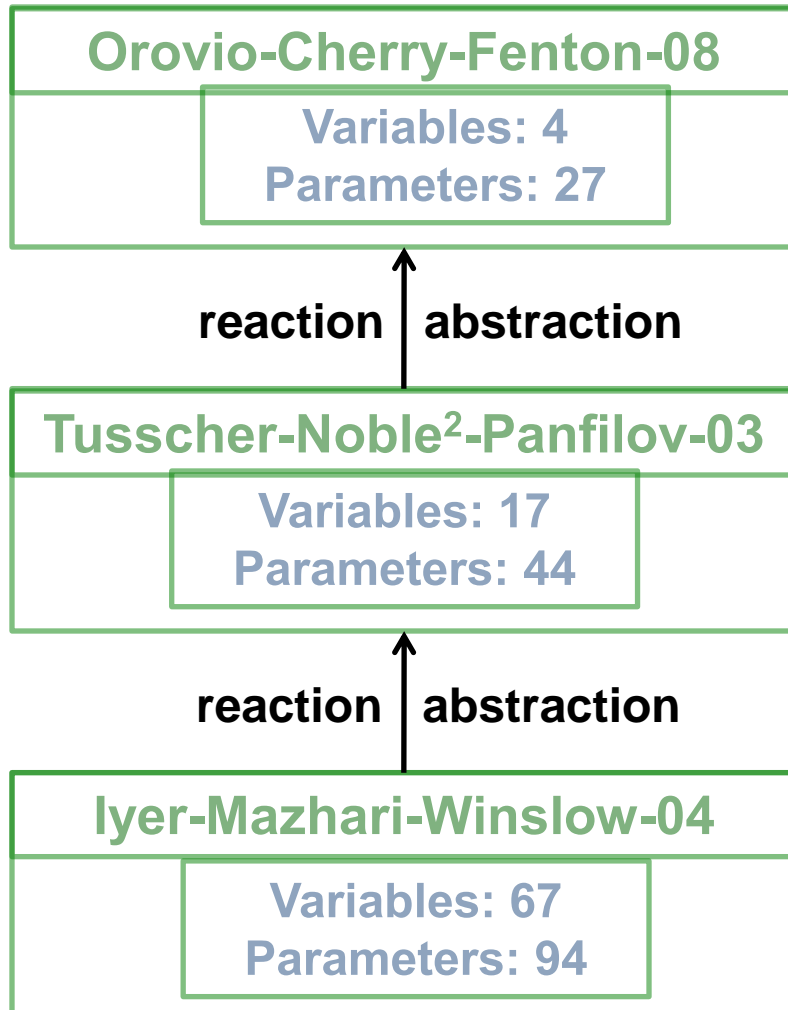
## Iyer-Mazhari-Winslow-04

Variables: 67  
Parameters: 94

## Most Detailed Ionic Model

- Latest experimental data
- Multi-affine ODE (MA law)

# Human Cardiac-Cell Models



## Minimal Ionic Model

- Mesoscopic behavior
- Sigmoidal ODE (Luo-Rudi)

## Less Detailed Ionic Model

- Recent experimental data
- Sigmoidal ODE (Luo-Rudi)

## Most Detailed Ionic Model

- Latest experimental data
- Multi-affine ODE (MA law)

# Reaction Abstraction (SPT)

**Orovio-Cherry-Fenton-08**

Variables: 4  
Parameters: 27

reaction ↑ abstraction

**Tusscher-Noble<sup>2</sup>-Panfilov-03**

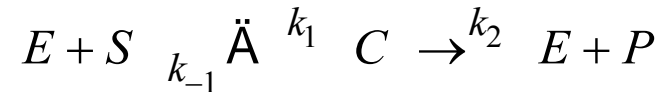
Variables: 17  
Parameters: 44

reaction ↑ abstraction

**Iyer-Mazhari-Winslow-04**

Variables: 67  
Parameters: 94

**Enzymatic Reactions (QSSA)**



# Reaction Abstraction (SPT)

**Orovio-Cherry-Fenton-08**

Variables: 4  
Parameters: 27

reaction ↑ abstraction

**Tusscher-Noble<sup>2</sup>-Panfilov-03**

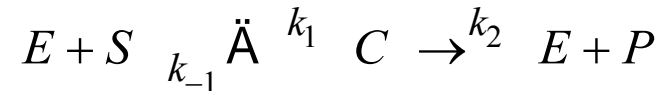
Variables: 17  
Parameters: 44

reaction ↑ abstraction

**Iyer-Mazhari-Winslow-04**

Variables: 67  
Parameters: 94

**Enzymatic Reactions (QSSA)**

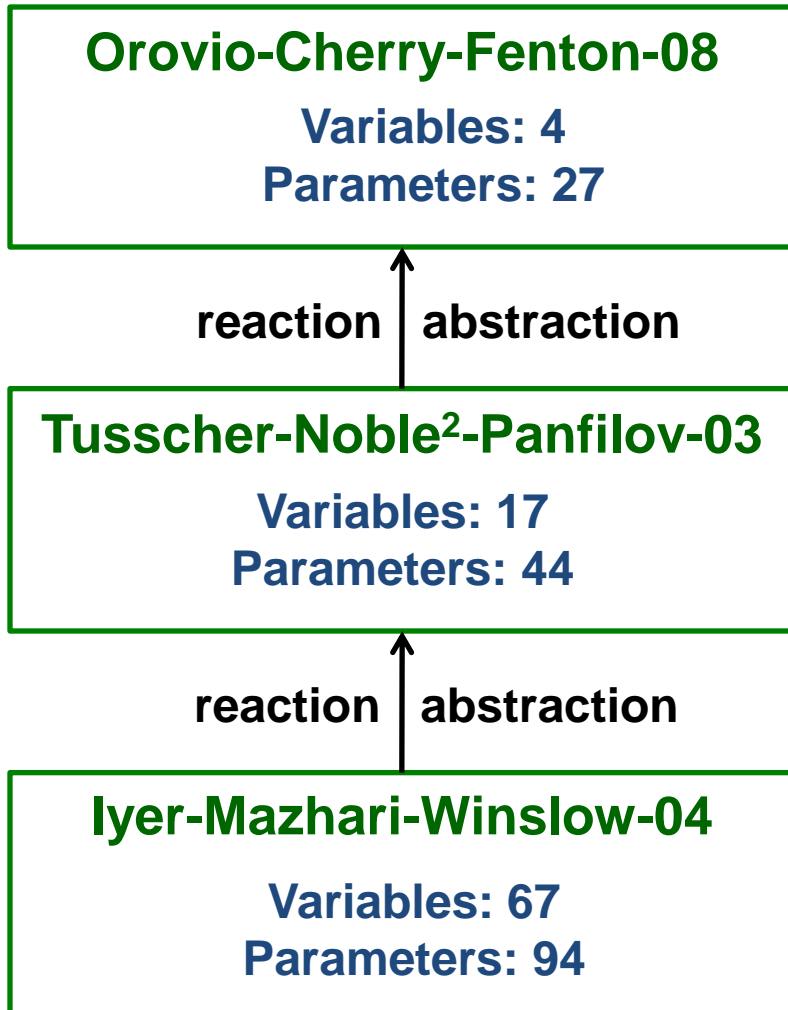


**Using the Law of Mass Action (MA):**

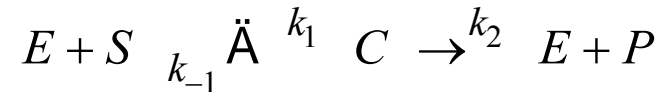
$$d[C] / dt = k_1[E][S] - (k_{-1} + k_2)[C]$$

$$d[P] / dt = k_2[C]$$

# Reaction Abstraction (SPT)



## Enzymatic Reactions (QSSA)



## Using the Law of Mass Action (MA):

$$d[C] / dt = k_1[E][S] - (k_{-1} + k_2)[C]$$

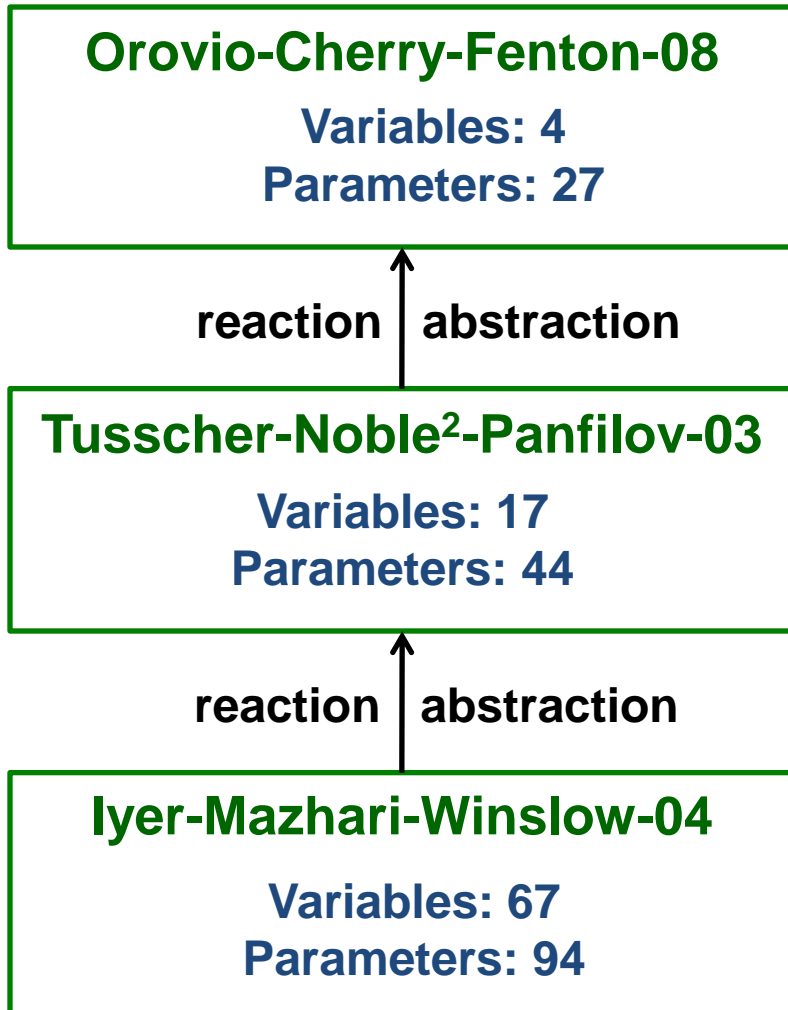
$$d[P] / dt = k_2[C]$$

## Assume $E = S$ and express $E$ :

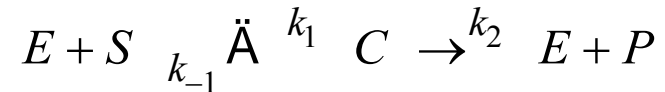
$$[C] = k_1 / (k_{-1} + k_2)[E][S]$$

$$[E] = [E_t] - [C]$$

# Reaction Abstraction (SPT)



## Enzymatic Reactions (QSSA)



## Using the Law of Mass Action (MA):

$$d[C] / dt = k_1[E][S] - (k_{-1} + k_2)[C]$$

$$d[P] / dt = k_2[C]$$

## Assume $E = S$ and express $E$ :

$$[C] = k_1 / (k_{-1} + k_2)[E][S]$$

$$[E] = [E_t] - [C]$$

## Michaelis-Menten Relation (Sigmoidal):

$$d[P] / dt = a / (1 + e^{-(u-\theta)}) = a \mathbf{S}^+(u, \theta, 1)$$

$$u = \ln[S], \quad a = k_2 E_t, \quad \theta = \ln(k_{-1} + k_2) / k_1$$

# Simulation: Hardware and Dimension

**Orovio-Cherry-Fenton-08**  
Variables: 4  
Parameters: 27

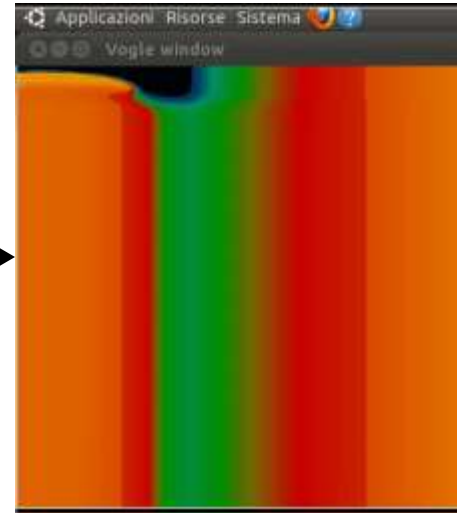
reaction abstraction

**Tusscher-Noble<sup>2</sup>-Panfilov-03**  
Variables: 17  
Parameters: 44

reaction abstraction

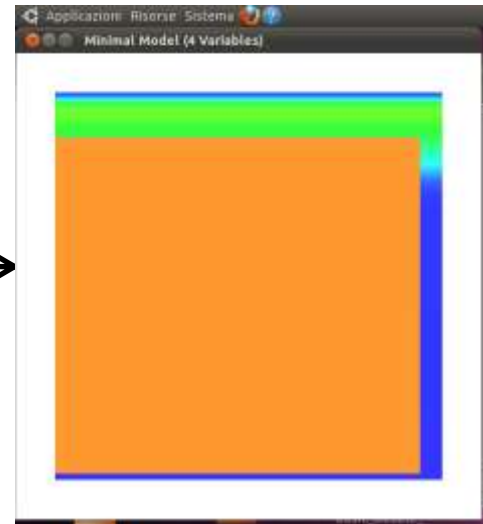
**Iyer-Mazhari-Winslow-04**  
Variables: 67  
Parameters: 94

**Multi-Core**



1s – ?s

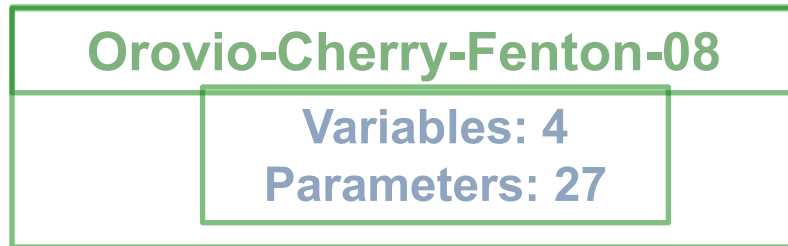
**NVIDIA GPU**



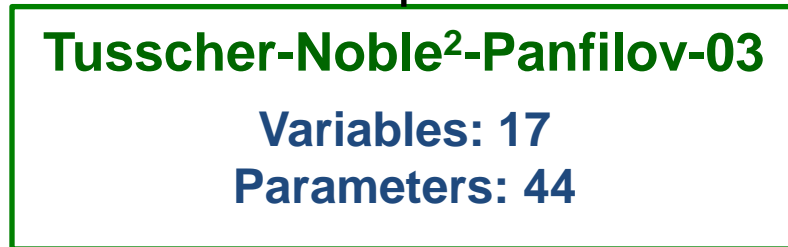
1s – 1s



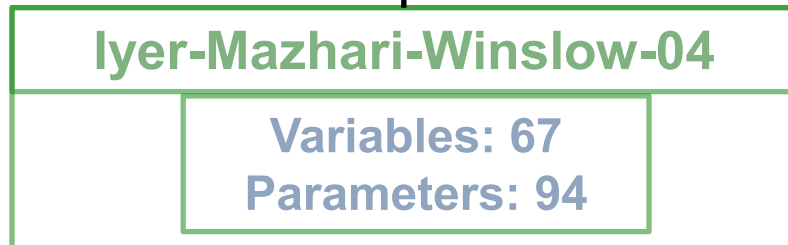
# Simulation: Hardware and Dimension



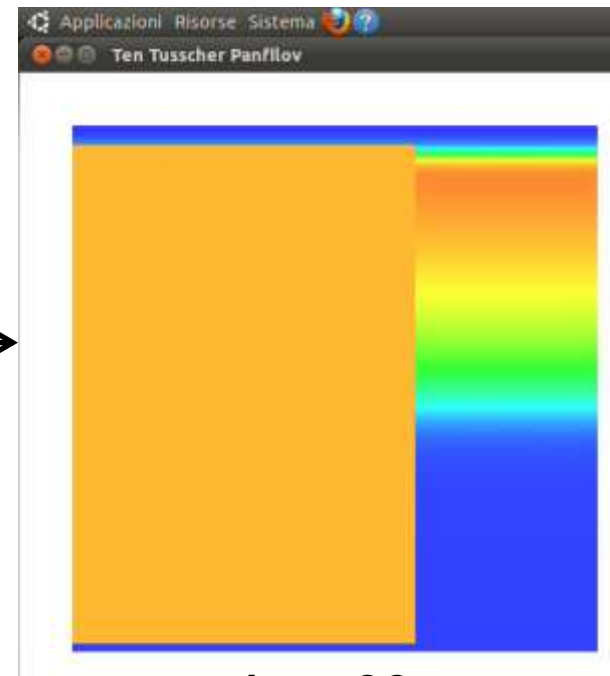
reaction abstraction



reaction abstraction

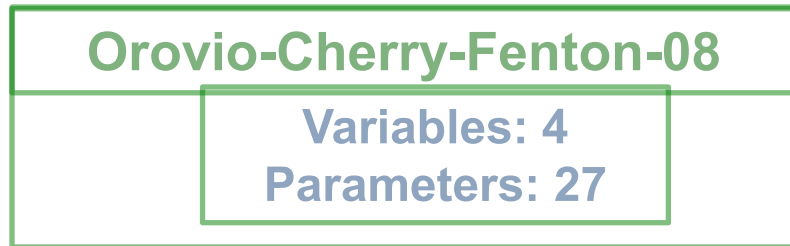


**NVIDIA GPU**

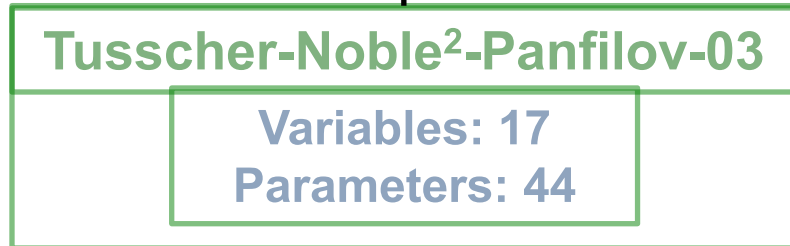


**1s – 20s**

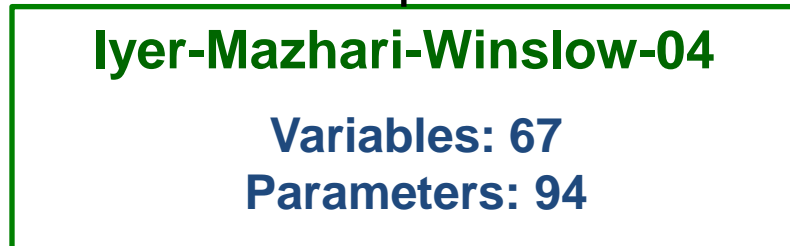
# Simulation: Hardware and Dimension



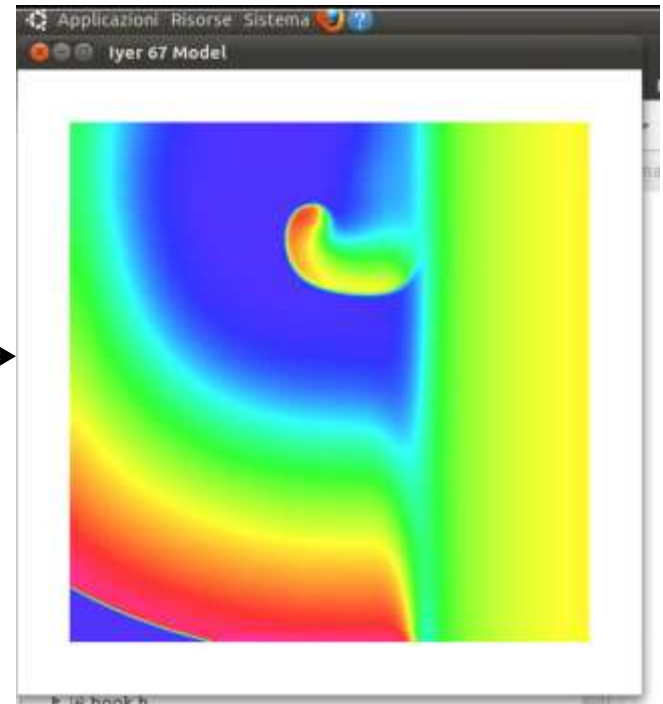
reaction abstraction



reaction abstraction



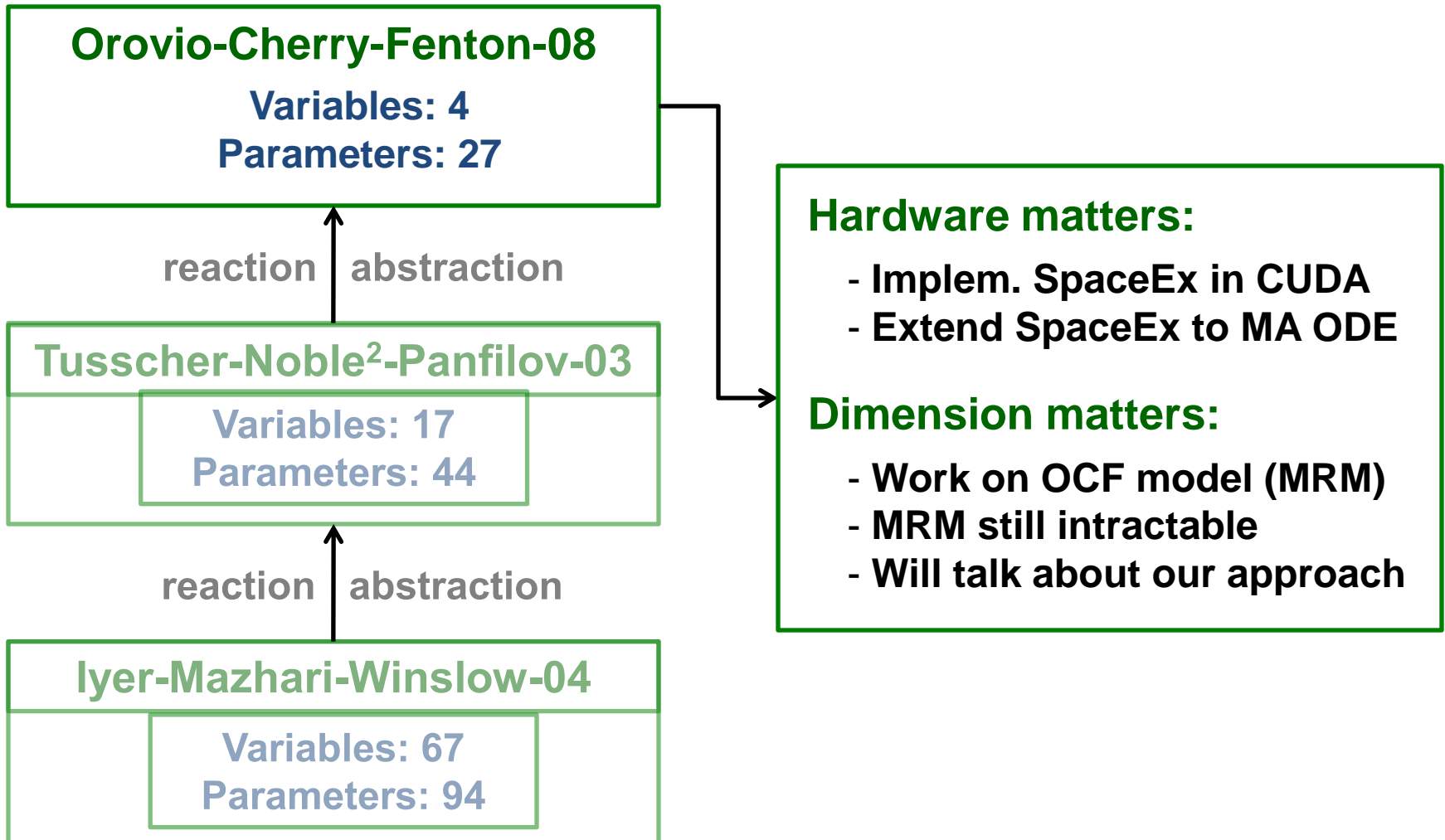
**NVIDIA GPU**



1s – 40s

**Wrong Behavior!**

# Param. Estim: Hardware and Dimension



# Param. Estim: Hardware and Dimension

**Orovio-Cherry-Fenton-08**  
Variables: 4  
Parameters: 27

?

**Tusscher-Noble<sup>2</sup>-Panfilov-03**  
Variables: 17  
Parameters: 44

?

**Iyer-Mazhari-Winslow-04**  
Variables: 67  
Parameters: 94

## Hardware matters:

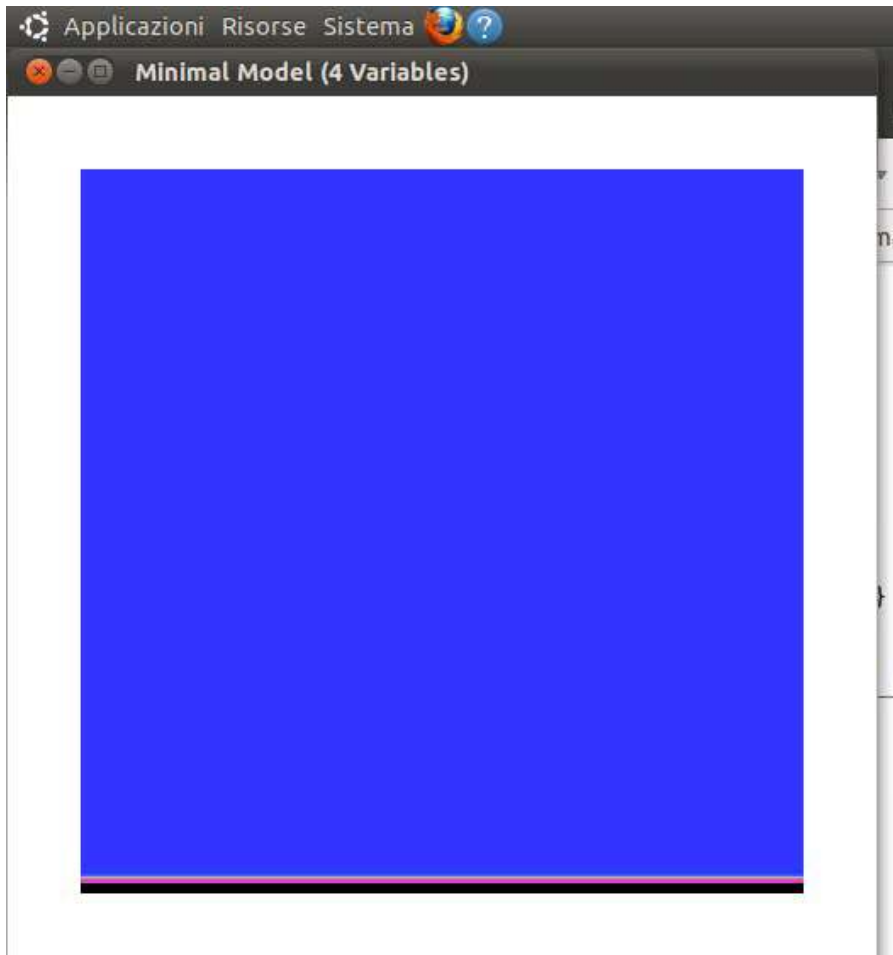
- Implem. SpaceEx in CUDA
- Extend SpaceEx to MA ODE

## Dimension matters:

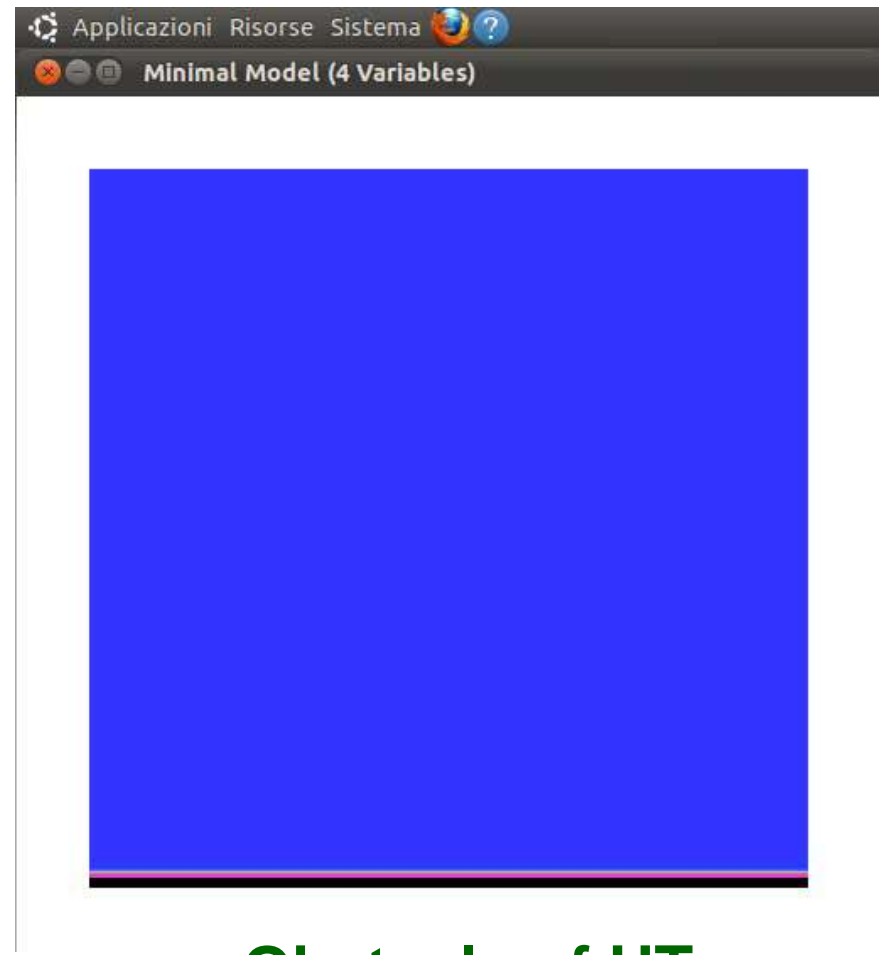
- Work on OCF model (MRM)
- MRM still intractable
- Will talk about our approach

# Lack of Excitability: Implications

**Stimulus:** bottom row, every 300ms



**No Obstacle**



**Obstacle of UT**

# Problem to Solve

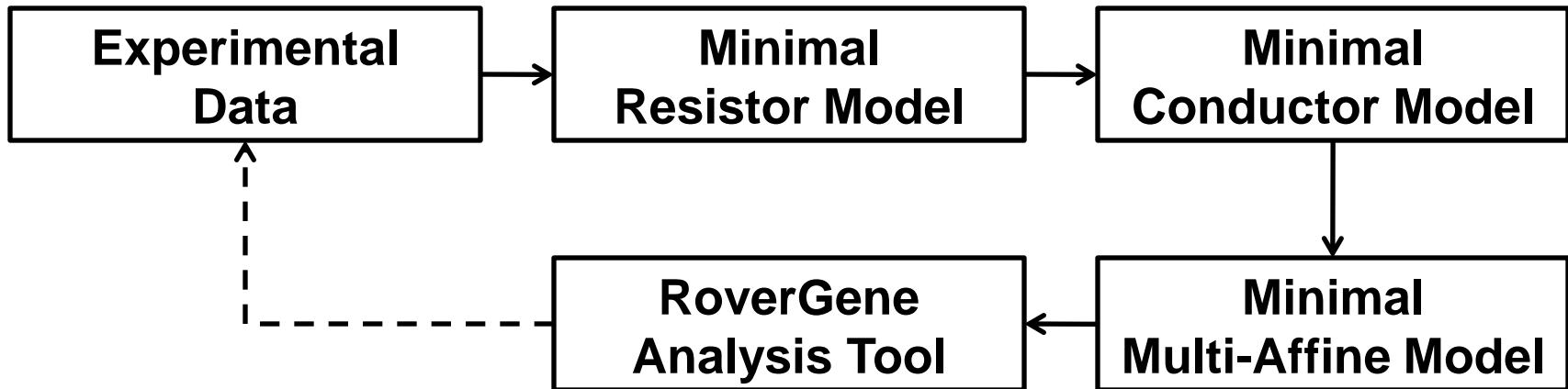
- **What circumstances** lead to a **loss of excitability**?
- **What parameter ranges** reproduce **loss of excitability**?

# Problem to Solve

- **What circumstances** lead to a loss of excitability?
- **What parameter ranges** reproduce loss of excitability?

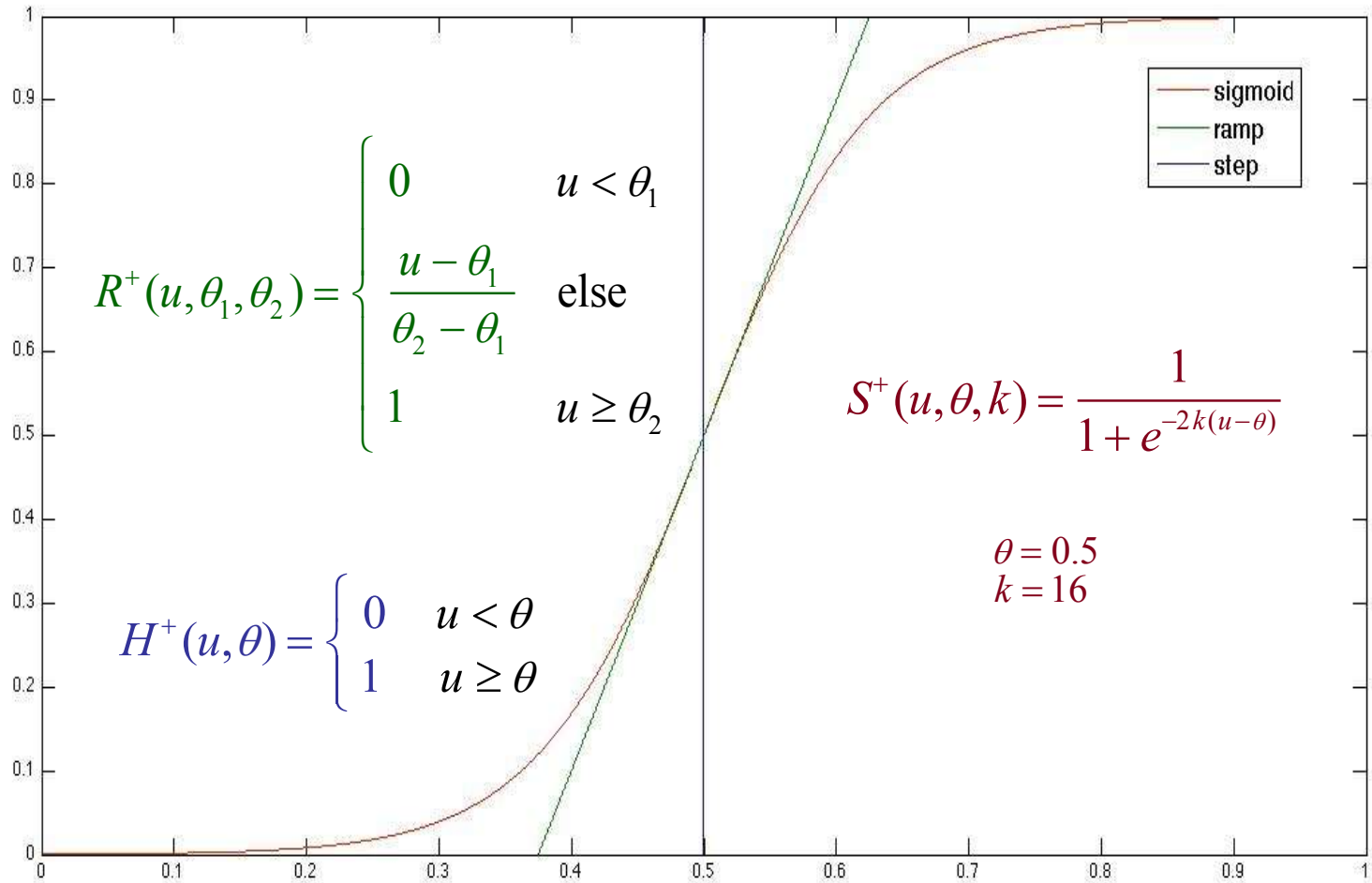
# Problem to Solve

- What circumstances lead to a loss of excitability?
- What parameter ranges reproduce loss of excitability?





# Biological Switching

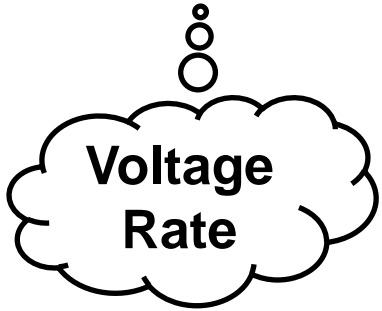


# Minimal Resistor Model: Voltage ODE

$$\dot{u}(u, v, w, s) = \nabla(D\nabla u) - (J_{f_i}(u, v) + J_{s_i}(u, w, s) + J_{s_o}(u))$$

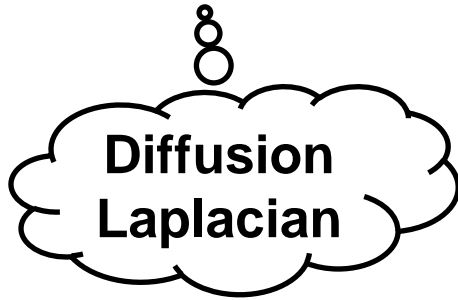
# Minimal Resistor Model: Voltage ODE

$$\dot{u}(u, v, w, s) = \nabla(D\nabla u) - (J_{f_i}(u, v) + J_{s_i}(u, w, s) + J_{s_o}(u))$$



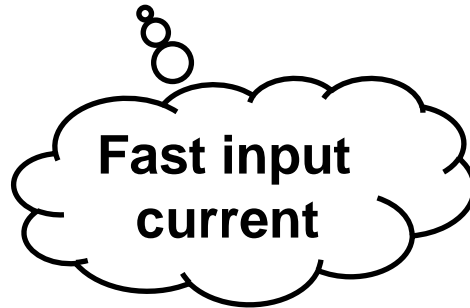
# Minimal Resistor Model: Voltage ODE

$$\dot{u}(u, v, w, s) = \nabla(D\nabla u) - (J_{fi}(u, v) + J_{si}(u, w, s) + J_{so}(u))$$



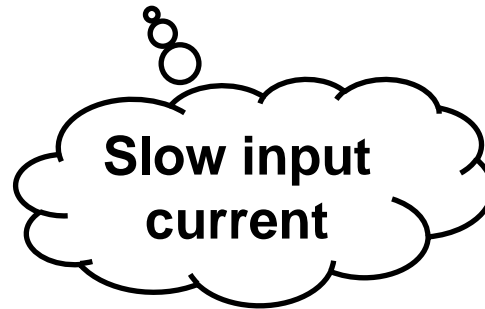
# Minimal Resistor Model: Voltage ODE

$$\dot{u}(u, v, w, s) = \nabla(D\nabla u) - (J_{fi}(u, v) + J_{si}(u, w, s) + J_{so}(u))$$



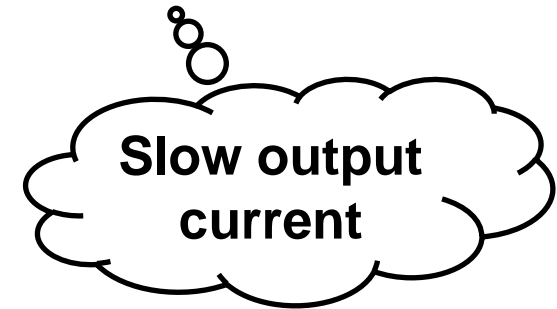
# Minimal Resistor Model: Voltage ODE

$$\dot{u}(u, v, w, s) = \nabla(D\nabla u) - (J_{fi}(u, v) + J_{si}(u, w, s) + J_{so}(u))$$



# Minimal Resistor Model: Voltage ODE

$$\dot{u}(u, v, w, s) = \nabla(D\nabla u) - (J_{fi}(u, v) + J_{si}(u, w, s) + J_{so}(u))$$



# MRM: Currents Equations

$$\dot{u}(u, v, w, s) = \nabla(D\nabla u) - (J_{fi}(u, v) + J_{si}(u, w, s) + J_{so}(u))$$

$$J_{fi}(u, v) = -H^+(u, \theta_v) (u - \theta_v)(u_u - u)v / \tau_{fi}$$

$$J_{si}(u, w, s) = -H^+(u, \theta_w) ws / \tau_{si}$$

$$J_{so}(u) = H^-(u, \theta_w) u / \tau_o(u) + H^+(u, \theta_w) / \tau_{so}(u)$$



# MRM: Currents Equations

$$\dot{u}(u, v, w, s) = \nabla(D\nabla u) \text{Heaviside (step)} (w, s) + J_{so}(u)$$

$$J_{fi}(u, v) = -H^+(u, \theta_v) (u - \theta_v)(u_u - u)v / \tau_{fi}$$

$$J_{si}(u, w, s) = -H^+(u, \theta_w) ws / \tau_{si}$$

$$J_{so}(u) = H^-(u, \theta_w) u / \tau_o(u) + H^+(u, \theta_w) / \tau_{so}(u)$$

# MRM: Currents Equations

$$\dot{u}(u, v, w, s) = \nabla(D\nabla u) - (J_{fi}(u, v) + J_{si}(u, w, s))$$

Constant  
Resistanc

e

$$J_{fi}(u, v) = -H^+(u, \theta_v) (u - \theta_v)(u_u - u)v / \tau_{fi}$$

$$J_{si}(u, w, s) = -H^+(u, \theta_w) ws / \tau_{si}$$

$$J_{so}(u) = H^-(u, \theta_w) u / \tau_o(u) + H^+(u, \theta_w) / \tau_{so}(u)$$

# MRM: Currents Equations

$$\dot{u}(u, v, w, s) = \nabla(D\nabla u) - (J_{fi}(u, v) + J_{si}(u, w, s) + J_{so}(u))$$

$$J_{fi}(u, v) = -H^+(u, \theta_v) (u - \theta_v)(u_u - u)v / \tau_{fi}$$

$$J_{si}(u, w, s) = -H^+(u, \theta_w) ws / \tau_{si}$$

$$J_{so}(u) = H^-(u, \theta_w) u / \tau_o(u) + H^+(u, \theta_w) / \tau_{so}(u)$$



Piecewise  
Nonlinear

# MRM: Currents Equations

$$\dot{u}(u, v, w, s) = \nabla(D\nabla u) - (J_{fi}(u, v) + J_{si}(u, w, s) + J_{so}(u))$$

$$J_{fi}(u, v) = -H^+(u, \theta_v) (u - \theta_v)(u_u - u)v / \tau_{fi}$$

$$J_{si}(u, w, s) = -H^+(u, \theta_w) ws / \tau_{si}$$

$$J_{so}(u) = H^-(u, \theta_w) u / \tau_o(u)$$



Piecewise  
Bilinear

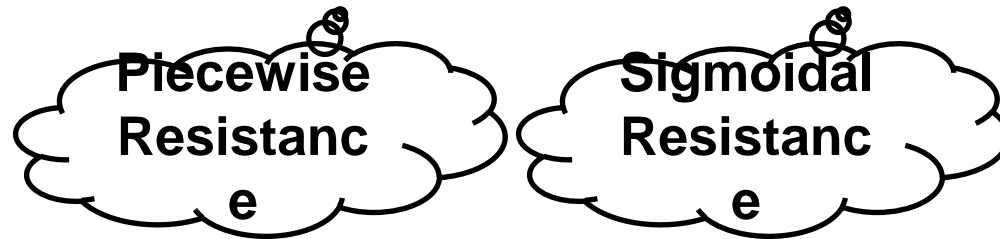
# MRM: Currents Equations

$$\dot{u}(u, v, w, s) = \nabla(D\nabla u) - (J_{fi}(u, v) + J_{si}(u, w, s) + J_{so}(u))$$

$$J_{fi}(u, v) = -H^+(u, \theta_v) (u - \theta_v)(u_u - u)v / \tau_{fi}$$

$$J_{si}(u, w, s) = -H^+(u, \theta_w) ws / \tau_{si}$$

$$J_{so}(u) = H^-(u, \theta_w) u / \tau_o(u) + H^+(u, \theta_w) / \tau_{so}(u)$$



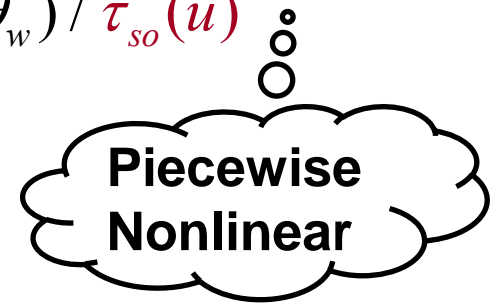
# MRM: Currents Equations

$$\dot{u}(u, v, w, s) = \nabla(D\nabla u) - (J_{fi}(u, v) + J_{si}(u, w, s) + J_{so}(u))$$

$$J_{fi}(u, v) = -H^+(u, \theta_v) (u - \theta_v)(u_u - u)v / \tau_{fi}$$

$$J_{si}(u, w, s) = -H^+(u, \theta_w) ws / \tau_{si}$$

$$J_{so}(u) = H^-(u, \theta_w) u / \tau_o(u) + H^+(u, \theta_w) / \tau_{so}(u)$$



# MRM: Gates ODEs

$$\dot{u}(u, v, w, s) = \nabla(D\nabla u) - (J_{fi}(u, v) + J_{si}(u, w, s) + J_{so}(u))$$

$$J_{fi}(u, v) = -H^+(u, \theta_v, 0, 1) (u - \theta_v)(u_u - u)v / \tau_{fi}$$

$$J_{si}(u, w, s) = -H^+(u, \theta_w, 0, 1) ws / \tau_{si}$$

$$J_{so}(u) = H^-(u, \theta_w, 0, 1) u / \tau_o(u) + H^+(u, \theta_w, 0, 1) / \tau_{so}(u)$$

$$\dot{v}(u, v) = H^-(u, \theta_v) (v_\infty - v) / \tau_v^-(u) - H^+(u, \theta_v)v / \tau_v^+$$

$$\dot{w}(u, w) = H^-(u, \theta_w)(w_\infty - w) / \tau_w^-(u) - H^+(u, \theta_w)w / \tau_w^+$$

$$\dot{s}(u, s) = (S^+(u, u_s, k_s) - s) / \tau_s(u)$$

# MRM: Gates ODEs

$$\dot{u}(u, v, w, s) = \nabla(D\nabla u) - (J_{fi}(u, v) + J_{si}(u, w, s) + J_{so}(u))$$

$$J_{fi}(u, v) = -H^+(u, \theta_v, 0, 1) (u - \theta_v)(u_u - u)v / \tau_{fi}$$

$$J_{si}(u, w, s) = -H^+(u, \theta_w, 0, 1) ws / \tau_{si}$$

$$J_{so}(u) = H^-(u, \theta_w, 0, 1) u / \tau_o(u) \quad \text{so}(u)$$

Piecewise Resistance

$$\dot{v}(u, v) = H^-(u, \theta_v) (v_\infty - v) / \tau_v^-(u) - H^+(u, \theta_v)v / \tau_v^+$$

$$\dot{w}(u, w) = H^-(u, \theta_w)(w_\infty - w) / \tau_w^-(u) - H^+(u, \theta_w)w / \tau_w^+$$

$$\dot{s}(u, s) = (S^+(u, u_s, k_s) - s) / \tau_s(u)$$

Piecewise Resistance



# MRM: Gates ODEs

$$\dot{u}(u, v, w, s) = \nabla(D\nabla u) - (J_{fi}(u, v) + J_{si}(u, w, s) + J_{so}(u))$$

$$J_{fi}(u, v) = -H^+(u, \theta_v, 0, 1) (u - \theta_v)(u_u - u)v / \tau_{fi}$$

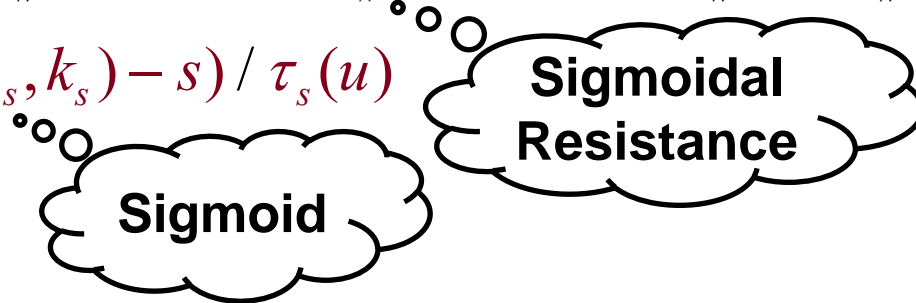
$$J_{si}(u, w, s) = -H^+(u, \theta_w, 0, 1) ws / \tau_{si}$$

$$J_{so}(u) = H^-(u, \theta_w, 0, 1) u / \tau_o(u) + H^+(u, \theta_w, 0, 1) / \tau_{so}(u)$$

$$\dot{v}(u, v) = H^-(u, \theta_v) (v_\infty - v) / \tau_v^-(u) - H^+(u, \theta_v)v / \tau_v^+$$

$$\dot{w}(u, w) = H^-(u, \theta_w)(w_\infty - w) / \tau_w^-(u) - H^+(u, \theta_w)w / \tau_w^+$$

$$\dot{s}(u, s) = (S^+(u, u_s, k_s) - s) / \tau_s(u)$$



# MRM: Voltage-Controlled Resistances/SSV

$$\tau_v^-(u) = H^-(u, \theta_o) \tau_{v_1}^- + H^+(u, \theta_o) \tau_{v_2}^-$$

$$\tau_s(u) = H^-(u, \theta_w) \tau_{s_1} + H^+(u, \theta_w) \tau_{s_2}$$

$$\tau_o(u) = H^-(u, \theta_o) \tau_{o_1} + H^+(u, \theta_o) \tau_{o_2}$$



# MRM: Voltage-Controlled Resistances/SSV

$$\tau_v^-(u) = H^-(u, \theta_o) \tau_{v_1}^- + H^+(u, \theta_o) \tau_{v_2}^-$$

$$\tau_s(u) = H^-(u, \theta_w) \tau_{s_1} + H^+(u, \theta_w) \tau_{s_2}$$

$$\tau_o(u) = H^-(u, \theta_o) \tau_{o_1} + H^+(u, \theta_o) \tau_{o_2}$$

$$\tau_w^-(u) = \tau_{w_1}^- + (\tau_{w_2}^- - \tau_{w_1}^-) S^+(u, u_s, k_w^-)$$

$$\tau_{so}(u) = \tau_{so_1} + (\tau_{so_2} - \tau_{so_1}) S^+(u, u_s, k_{so})$$

Piecowis  
e  
Constant

Sigmoidal

# MRM: Voltage-Controlled Resistances/SSV

$$\tau_v^-(u) = H^-(u, \theta_o) \tau_{v_1}^- + H^+(u, \theta_o) \tau_{v_2}^-$$

$$\tau_s(u) = H^-(u, \theta_w) \tau_{s_1} + H^+(u, \theta_w) \tau_{s_2}$$

$$\tau_o(u) = H^-(u, \theta_o) \tau_{o_1} + H^+(u, \theta_o) \tau_{o_2}$$

$$\tau_w^-(u) = \tau_{w_1}^- + (\tau_{w_2}^- - \tau_{w_1}^-) S^+(u, u_s, k_w^-)$$

$$\tau_{so}(u) = \tau_{so_1} + (\tau_{so_2} - \tau_{so_1}) S^+(u, u_s, k_w^+)$$

$$v_\infty(u) = H^-(u, \theta_o)$$

$$w_\infty(u) = H^-(u, \theta_o) (1 - u / \tau_{w\infty}) + H^+(u, \theta_o) W_\infty^*$$

Piecewise  
e  
Constant

Sigmoidal

Piecewise  
e  
Constant

Piecewise  
Linear

# MRM: Scaled Steps and Sigmoids

$$\tau_v^-(u) = H^+(u, \theta_o, \tau_{v_1}^-, \tau_{v_2}^-)$$

$$\tau_s(u) = H^+(u, \theta_w, \tau_{s_1}, \tau_{s_2})$$

$$\tau_o(u) = H^+(u, \theta_o, \tau_{o_1}, \tau_{o_2})$$



# MRM: Scaled Steps and Sigmoids

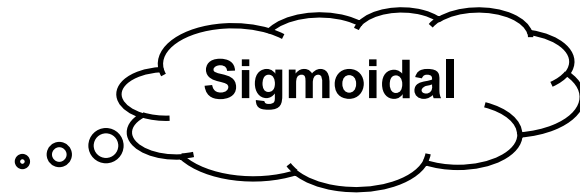
$$\tau_v^-(u) = H^+(u, \theta_o, \tau_{v_1}^-, \tau_{v_2}^-)$$

$$\tau_s(u) = H^+(u, \theta_w, \tau_{s_1}, \tau_{s_2})$$

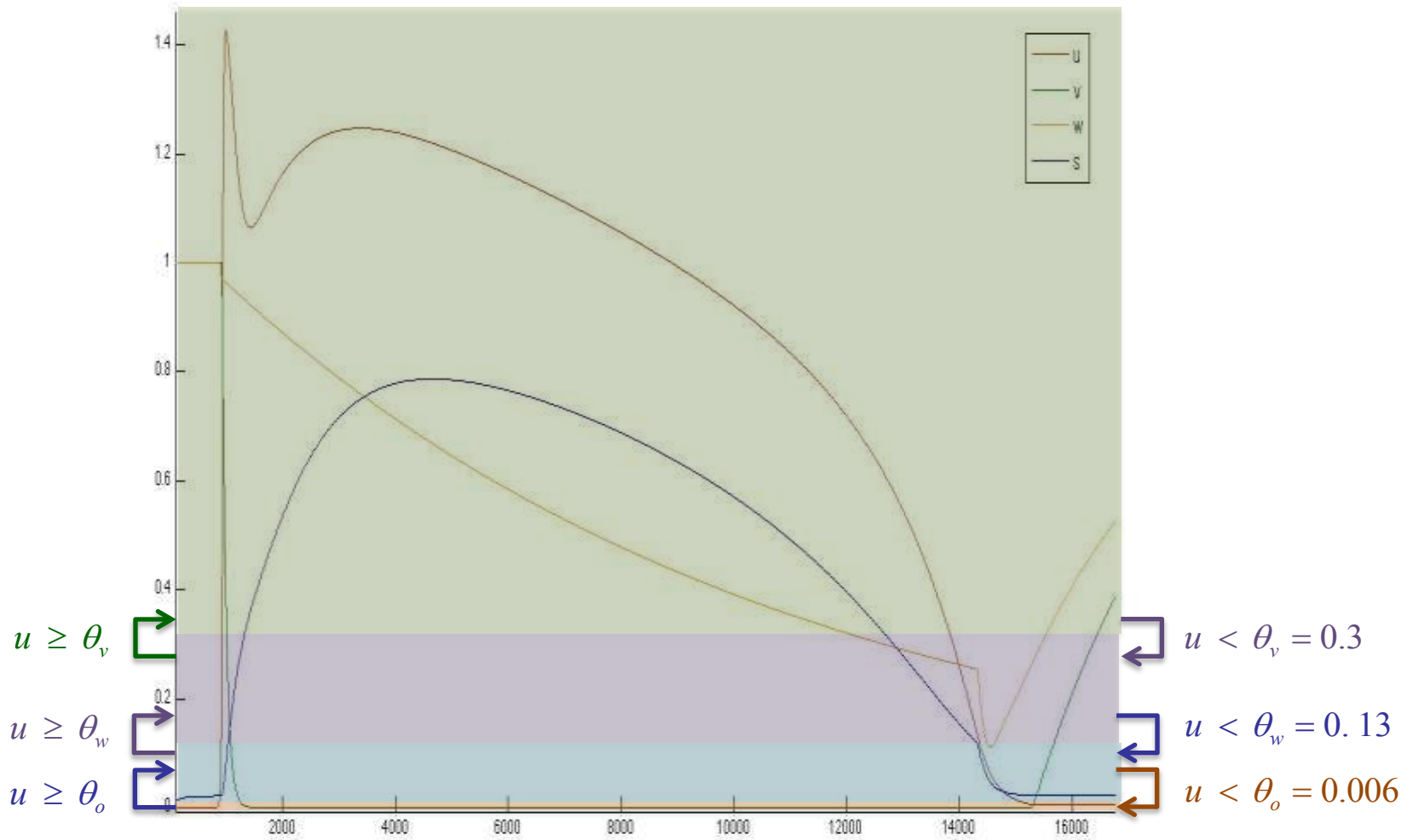
$$\tau_o(u) = H^+(u, \theta_o, \tau_{o_1}, \tau_{o_2})$$

$$\tau_w^-(u) = S^+(u, u_s, k_w^-, \tau_{w_1}^-, \tau_{w_2}^-)$$

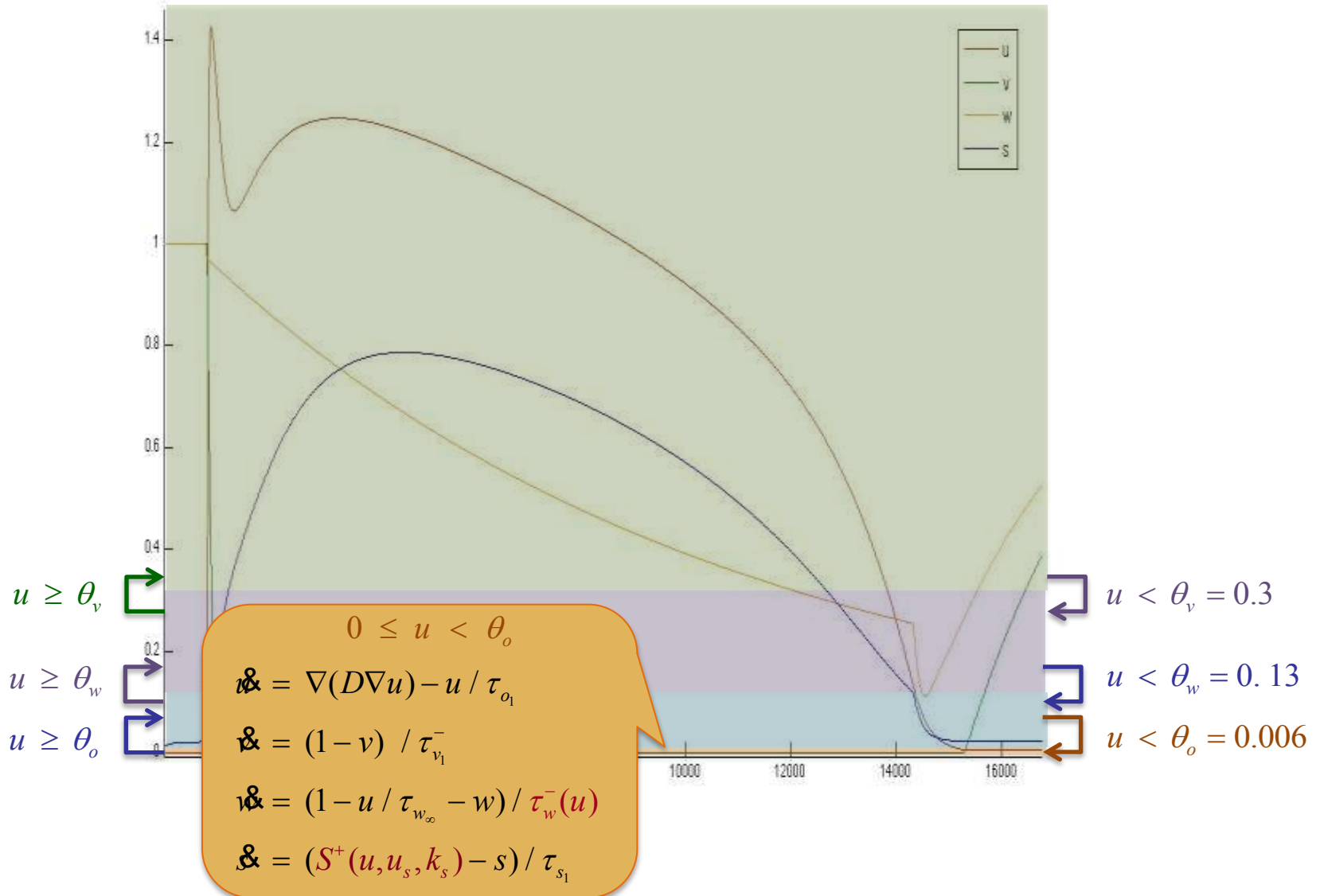
$$\tau_{so}(u) = S^+(u, u_s, k_{so}, \tau_{so_1}, \tau_{so_2})$$



# Minimal Resistance Model (MRM)

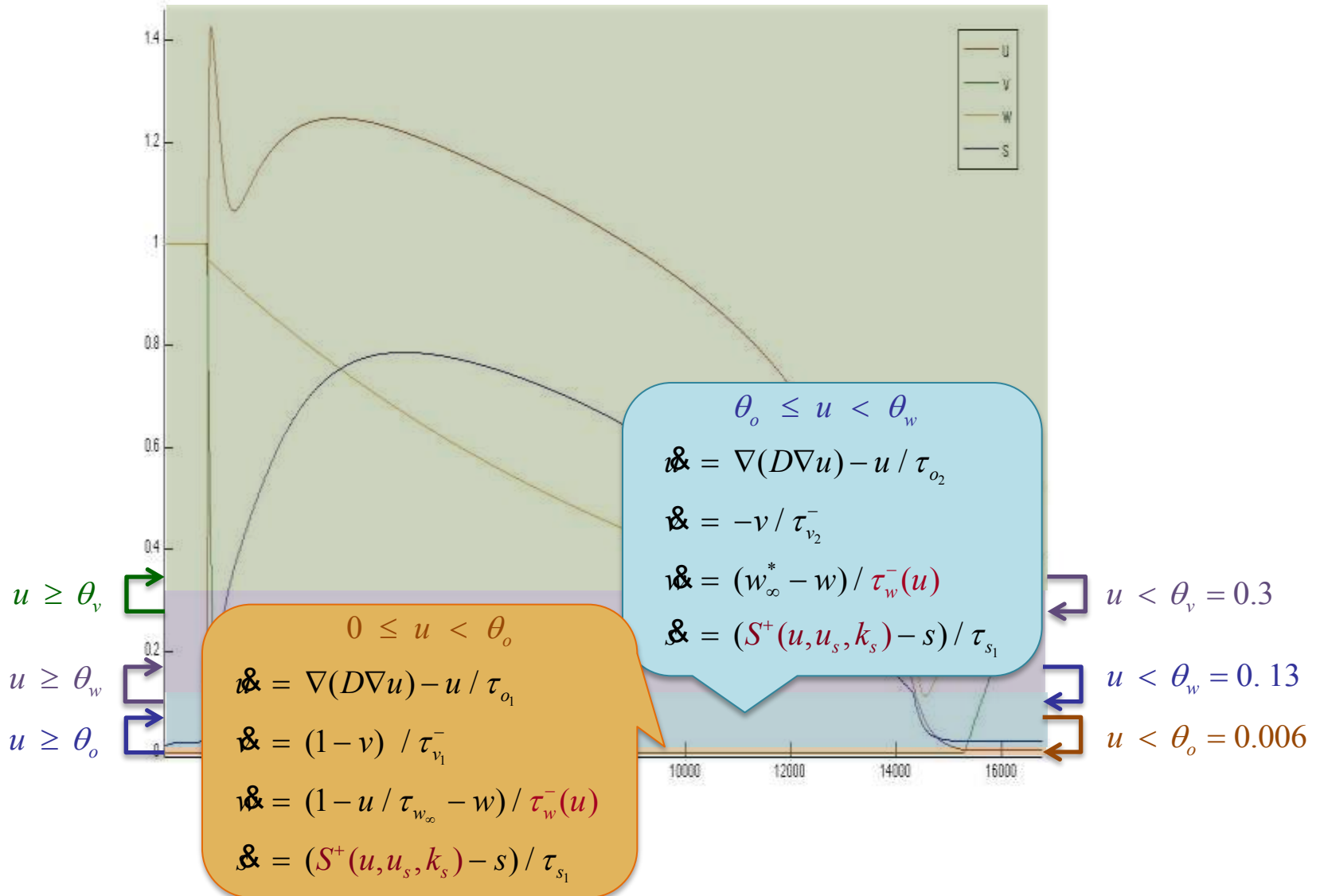


# Minimal Resistance Model (MRM)

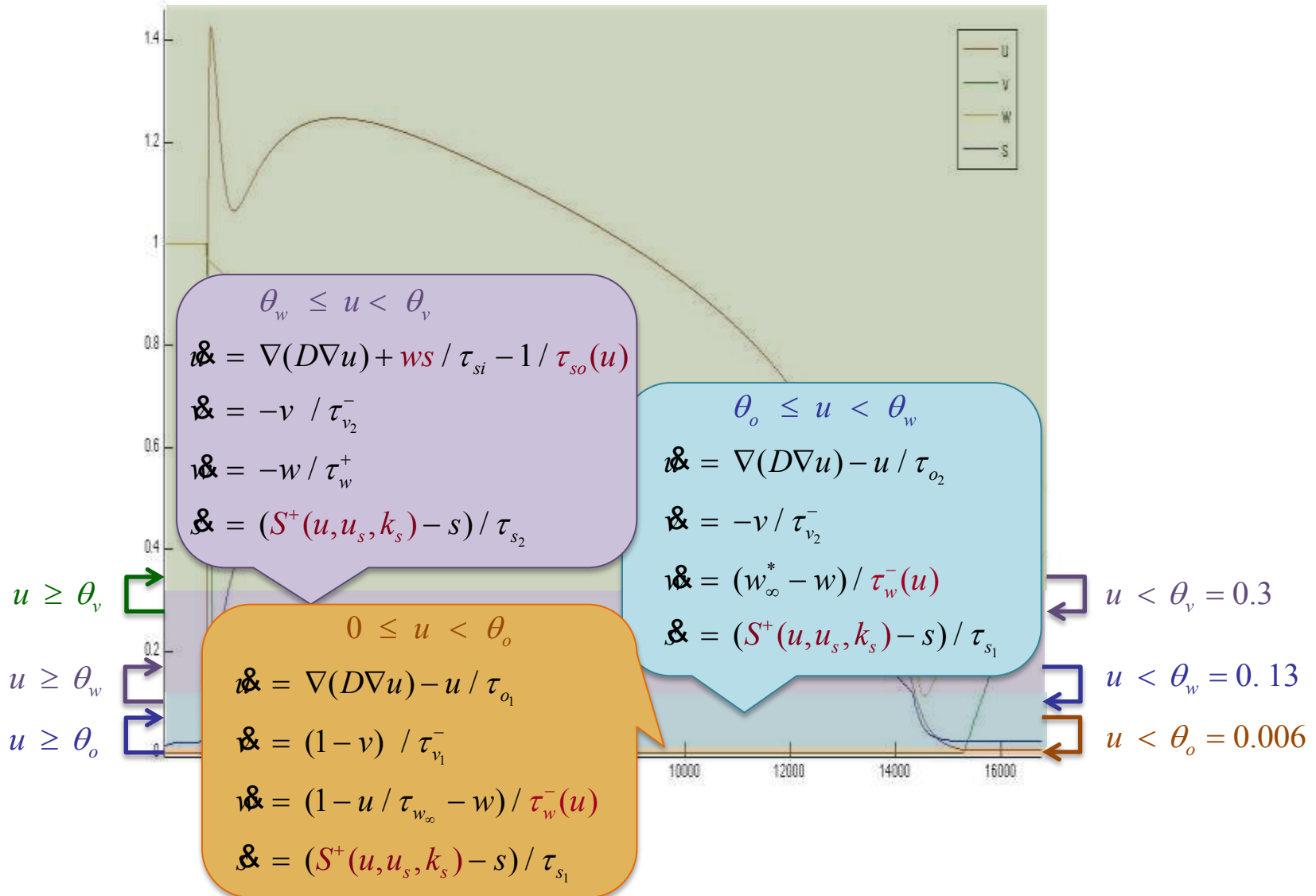




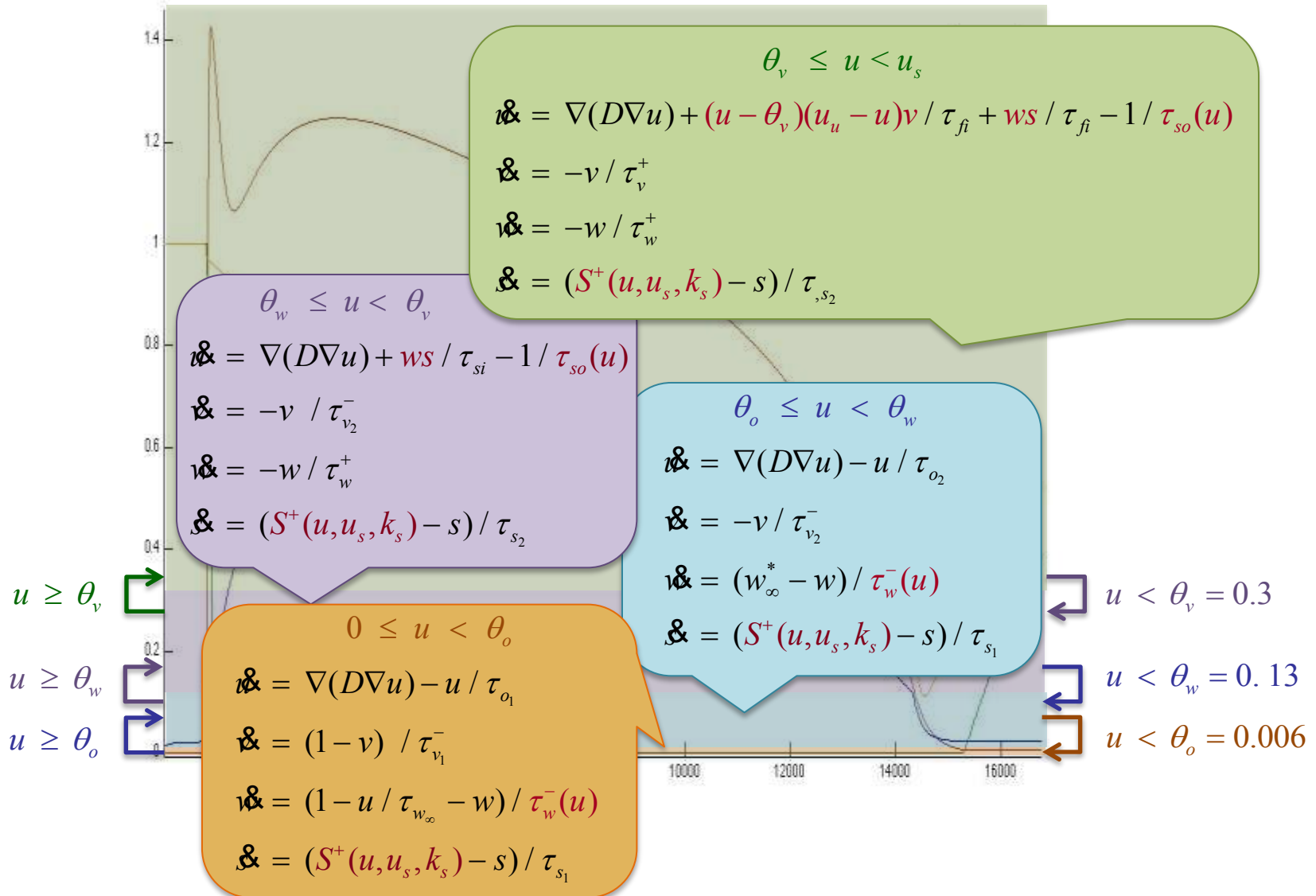
# Minimal Resistance Model (MRM)



# Minimal Resistance Model (MRM)



# Minimal Resistance Model (MRM)



# Sigmoid Closure Property

**Theorem:** For  $ab > 0$ , scaled sigmoids are closed under the **reciprocal operation**:

$$S^+(u, k, \theta, a, b)^{-1} = S^-\left(u, k, \theta + \frac{\ln\left(\frac{a}{b}\right)}{2k}, \frac{1}{b}, \frac{1}{a}\right)$$

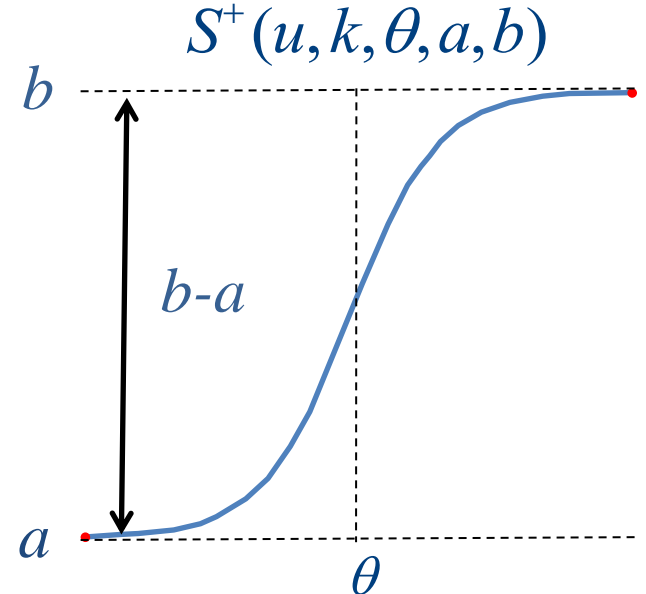
# Sigmoid Closure Property

**Theorem:** For  $ab > 0$ , scaled sigmoids are closed under the **reciprocal operation**:

$$S^+(u, k, \theta, a, b)^{-1} = S^-(u, k, \theta + \frac{\ln(\frac{a}{b})}{2k}, \frac{1}{b}, \frac{1}{a})$$

**Proof:**

$$S^+(u, k, \theta, a, b)^{-1} = \left( a + \frac{b - a}{1 + e^{-2k(u - \theta)}} \right)^{-1}$$



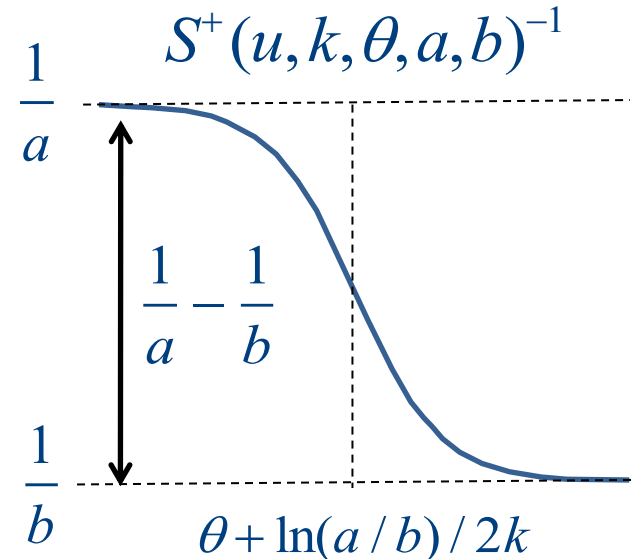
# Sigmoid Reciprocal Closure

**Theorem:** For  $a \cdot b > 0$ , scaled sigmoids are closed under the **reciprocal operation**:

$$S^+(u, k, \theta, a, b)^{-1} = S^-(u, k, \theta + \frac{\ln(\frac{a}{b})}{2k}, \frac{1}{b}, \frac{1}{a})$$

**Proof:**

$$S^+(u, k, \theta, a, b)^{-1} = \frac{1}{a} - \frac{\frac{1}{a} - \frac{1}{b}}{1 + e^{-2k(u - (\theta + \frac{\ln a - \ln b}{2k}))}}$$



# From Resistances to Conductances

## Removing Divisions using Sigmoid Reciprocal:

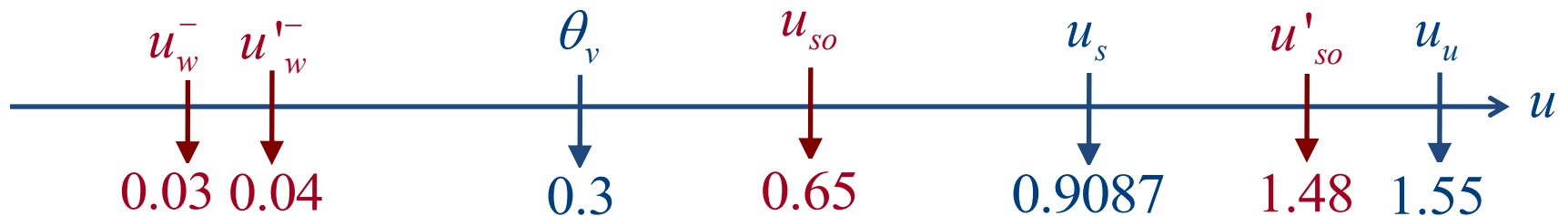
$$\tau_w^- = S^-(u, k_w^-, u_w^-, \tau_{w_1}^-, \tau_{w_2}^-) \quad g_w^- = 1 / \tau_w^- = S^+(u, k_w^-, u_w'^-, \tau_{w_1}^{-1}, \tau_{w_2}^{-1})$$



# From Resistances to Conductances

## Removing Divisions using Sigmoid Reciprocal:

$$\begin{aligned}\tau_w^- &= S^-(u, k_w^-, u_w^-, \tau_{w_1}^-, \tau_{w_2}^-) & g_w^- &= 1 / \tau_w^- = S^+(u, k_w^-, u_w'^-, \tau_{w_1}^{-1}, \tau_{w_2}^{-1}) \\ \tau_{so} &= S^-(u, k_{so}, u_{so}, \tau_{so_1}, \tau_{so_2}) & g_{so} &= 1 / \tau_{so} = S^+(u, k_{so}, u_{so}', \tau_{so_1}^{-1}, \tau_{so_2}^{-1})\end{aligned}$$





# From Resistances to Conductances

## Removing Divisions using Sigmoid Reciprocal:

$$\tau_w^- = S^-(u, k_w^-, u_w^-, \tau_{w_1}^-, \tau_{w_2}^-) \quad g_w^- = 1 / \tau_w^- = S^+(u, k_w^-, u_w', \tau_{w_1}^{-1}, \tau_{w_2}^{-1})$$

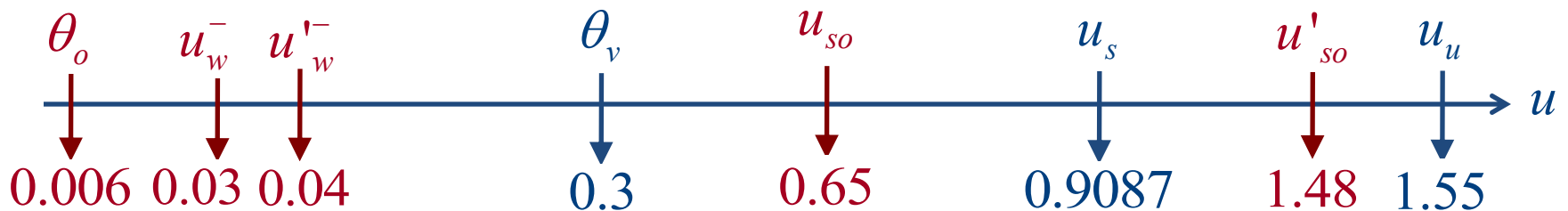
$$\tau_{so}^- = S^-(u, k_{so}^-, u_{so}^-, \tau_{so_1}^-, \tau_{so_2}^-) \quad g_{so}^- = 1 / \tau_{so}^- = S^+(u, k_{so}^-, u_{so}', \tau_{so_1}^{-1}, \tau_{so_2}^{-1})$$

## Removing Divisions using Step Reciprocal:

$$\tau_v^- = H^+(u, \theta_o, \tau_{v_1}^-, \tau_{v_2}^-) \quad g_v^- = 1 / \tau_v^- = H^-(u, \theta_o, \tau_{v_1}^{-1}, \tau_{v_2}^{-1})$$

$$\tau_o^- = H^-(u, \theta_o, \tau_{o_1}^-, \tau_{o_2}^-) \quad g_o^- = 1 / \tau_o^- = H^+(u, \theta_o, \tau_{o_1}^{-1}, \tau_{o_2}^{-1})$$

$$v_\infty = H^-(u, \theta_o, 0, 1) \quad w_\infty = H^-(u, \theta_o, 0, 1) (1 - u g_{w_\infty}) + H^+(u, \theta_o, 0, w_\infty^*)$$



# From Resistances to Conductances

## Removing Divisions using Sigmoid Reciprocal:

$$\begin{aligned} \tau_w^- &= S^-(u, k_w^-, u_w^-, \tau_{w_1}^-, \tau_{w_2}^-) & g_w^- &= 1 / \tau_w^- = S^+(u, k_w^-, u_w', \tau_{w_1}^{-1}, \tau_{w_2}^{-1}) \\ \tau_{so} &= S^-(u, k_{so}, u_{so}, \tau_{so_1}, \tau_{so_2}) & g_{so} &= 1 / \tau_{so} = S^+(u, k_{so}, u'_{so}, \tau_{so_1}^{-1}, \tau_{so_2}^{-1}) \end{aligned}$$

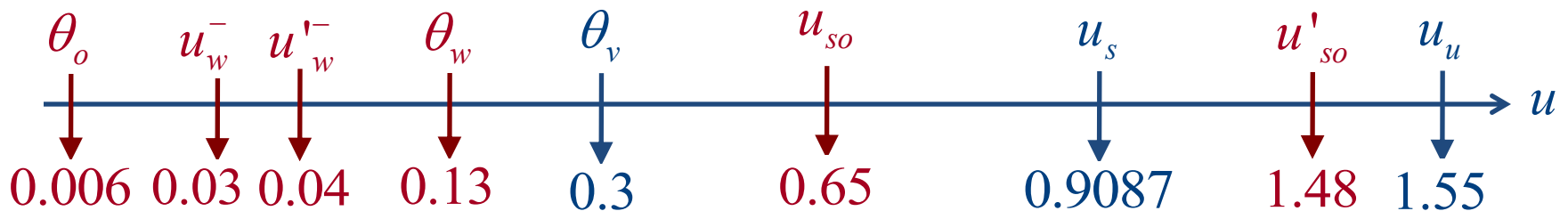
## Removing Divisions using Step Reciprocal:

$$\tau_v^- = H^+(u, \theta_o, \tau_{v_1}^-, \tau_{v_2}^-) \quad g_v^- = 1 / \tau_v^- = H^-(u, \theta_o, \tau_{v_1}^{-1}, \tau_{v_2}^{-1})$$

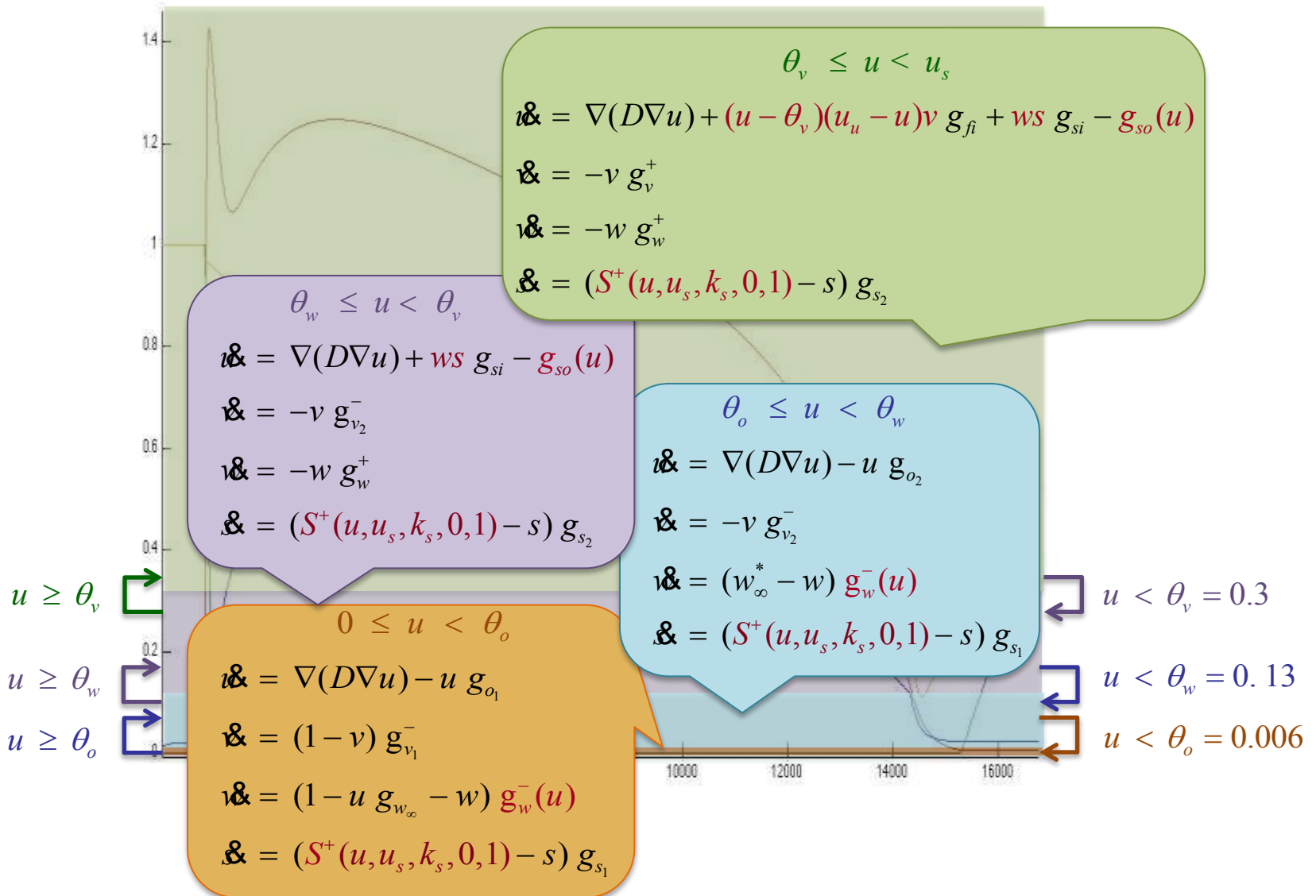
$$\tau_o = H^-(u, \theta_o, \tau_{o_1}, \tau_{o_2}) \quad g_o = 1 / \tau_o = H^+(u, \theta_o, \tau_{o_1}^{-1}, \tau_{o_2}^{-1})$$

$$\tau_s = H^+(u, \theta_w, \tau_{s_1}, \tau_{s_2}) \quad g_s = 1 / \tau_s = H^-(u, \theta_w, \tau_{s_1}^{-1}, \tau_{s_2}^{-1})$$

$$v_\infty = H^-(u, \theta_o, 0, 1) \quad w_\infty = H^-(u, \theta_o, 0, 1) (1 - u g_{w_\infty}) + H^+(u, \theta_o, 0, w_\infty^*)$$



# Minimal Conductance Model (MCM)



# Gene Regulatory Networks (GRN)

GRN canonical sigmoidal form:

$$\dot{u}_i = \sum_{j=1}^{m_i} a_{ij} \prod_{k=1}^{n_j} S^{\pm}(u_k, k_k, \theta_k, a_k, b_k) - b_i u_i$$

# Gene Regulatory Networks (GRN)

GRN canonical sigmoidal form:

$$\dot{u}_i = \sum_{j=1}^{m_i} a_{ij} \prod_{k=1}^{n_j} S^{\pm}(u_k, k_k, \theta_k, a_k, b_k) - b_i u_i$$

where:

$a_{ij}$  : are activation / inhibition constants

$b_i$  : are decay constants

$S^{\pm}(\cdot)$  : are on / off sigmoidal functions

# Gene Regulatory Networks (GRN)

GRN canonical sigmoidal form:

$$\dot{u}_i = \sum_{j=1}^{m_i} a_{ij} \prod_{k=1}^{n_j} S^{\pm}(u_k, k_k, \theta_k, a_k, b_k) - b_i u_i$$

where:

$a_{ij}$  : are activation / inhibition constants

$b_i$  : are decay constants

$S^{\pm}(\cdot)$  : are on / off sigmoidal functions

**Note:** steps and ramps are sigmoid approximations

# Optimal Polygonal Approximation

**Given:** One nonlinear curve and desired # segments

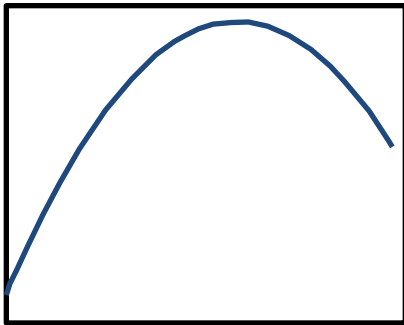
**Find:** Optimal polygonal approximation

# Optimal Polygonal Approximation

**Given:** One nonlinear curve and desired # segments

**Find:** Optimal polygonal approximation

**Example:** What is the optimal polygonal approximation of the blue curve with 3 segments ?



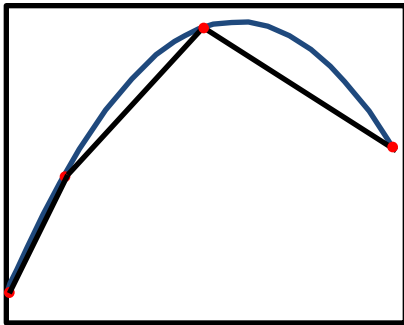


# Optimal Polygonal Approximation

**Given:** One nonlinear curve and desired # segments

**Find:** Optimal polygonal approximation

**Example:** What is the optimal polygonal approximation of the blue curve with 3 segments ?

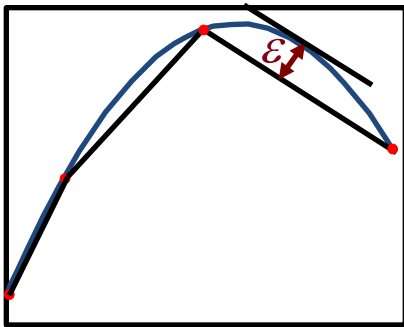


# Optimal Polygonal Approximation

**Given:** One nonlinear curve and desired # segments

**Find:** Optimal polygonal approximation

**Example:** What is the optimal polygonal approximation of the blue curve with 3 segments ?

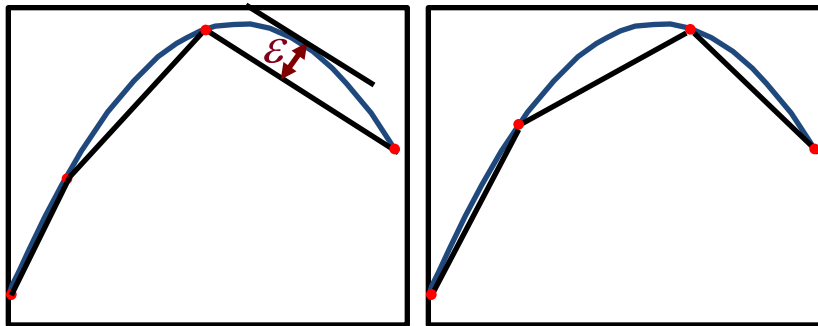


# Optimal Polygonal Approximation

**Given:** One nonlinear curve and desired # segments

**Find:** Optimal polygonal approximation

**Example:** What is the optimal polygonal approximation of the blue curve with 3 segments ?

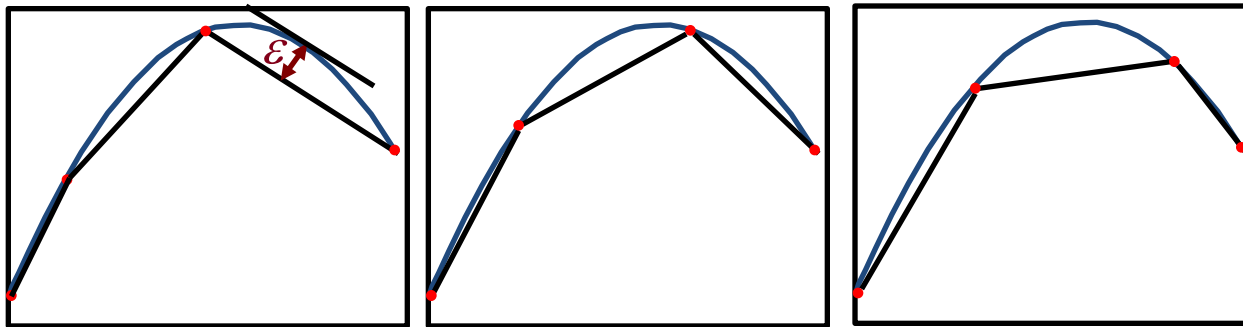


# Optimal Polygonal Approximation

**Given:** One nonlinear curve and desired # segments

**Find:** Optimal polygonal approximation

**Example:** What is the optimal polygonal approximation of the blue curve with 3 segments ?

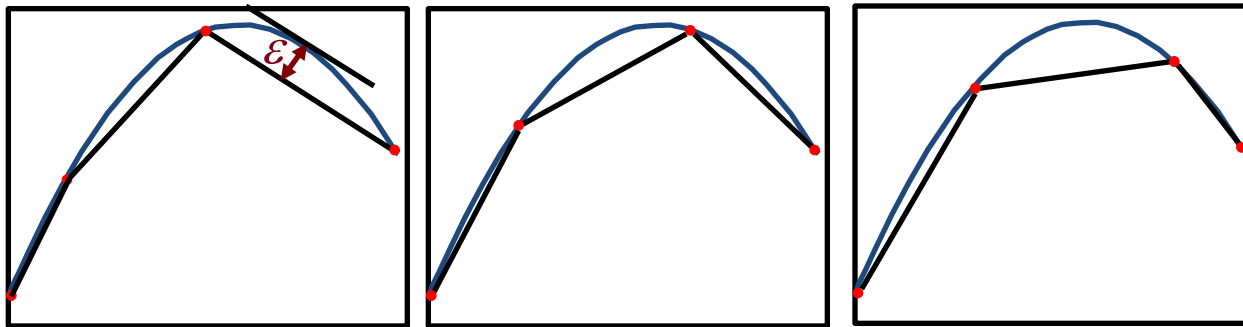


# Optimal Polygonal Approximation

**Given:** One nonlinear curve and desired # segments

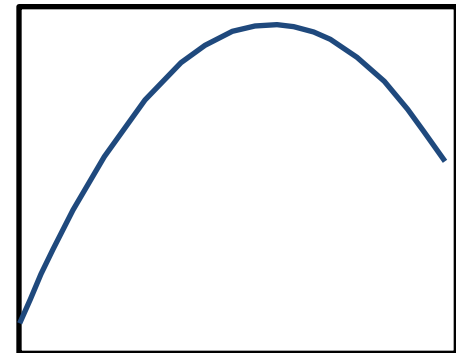
**Find:** Optimal polygonal approximation

**Example:** What is the optimal polygonal approximation of the blue curve with 3 segments ?



## Dynamic Programming Algorithm

- **Complexity:**  $O(P^2)$
- **P:** # points of the curve

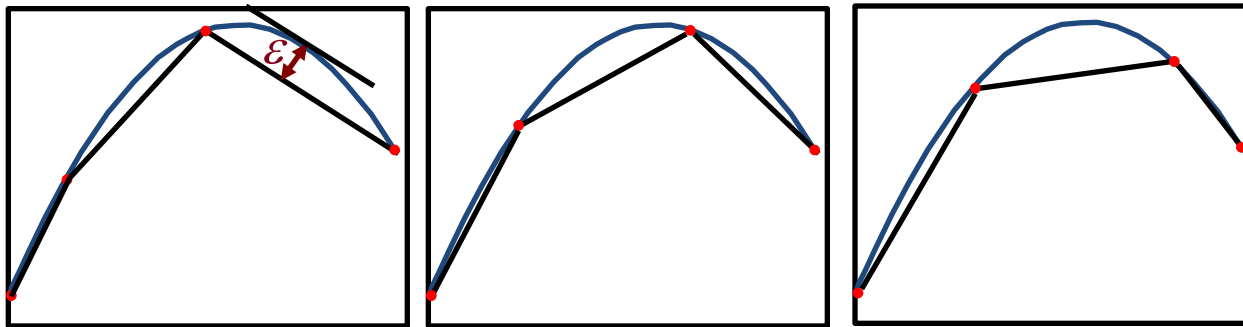


# Optimal Polygonal Approximation

**Given:** One nonlinear curve and desired # segments

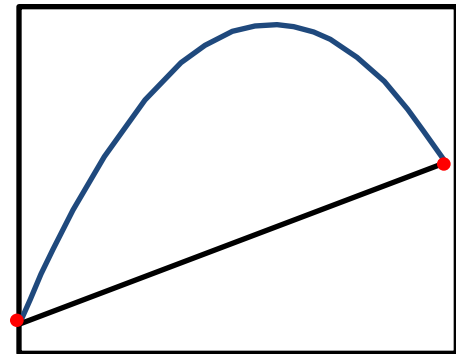
**Find:** Optimal polygonal approximation

**Example:** What is the optimal polygonal approximation of the blue curve with 3 segments ?



## Dynamic Programming Algorithm

- **Complexity:**  $O(P^2)$
- **P:** # points of the curve

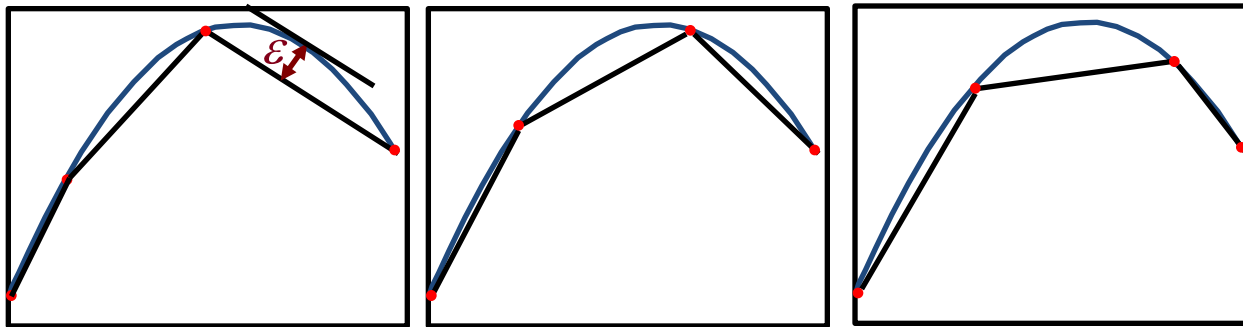


# Optimal Polygonal Approximation

**Given:** One nonlinear curve and desired # segments

**Find:** Optimal polygonal approximation

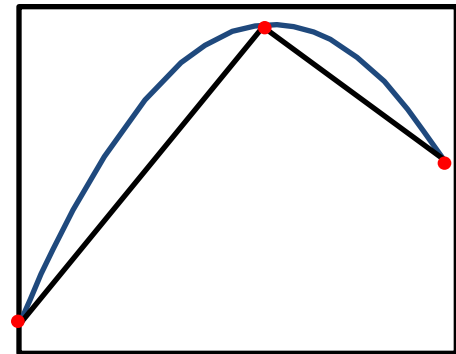
**Example:** What is the optimal polygonal approximation of the blue curve with 3 segments ?



## Dynamic Programming Algorithm

- **Complexity:**  $O(P^2)$
- **P:** # points of the curve

M. Salotti, Pattern Recognition Letters 22 (2001), Pag 215-221

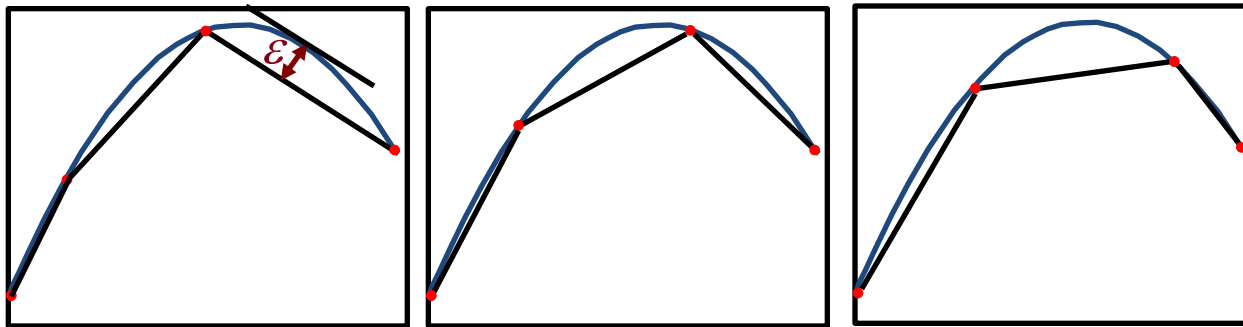


# Optimal Polygonal Approximation

**Given:** One nonlinear curve and desired # segments

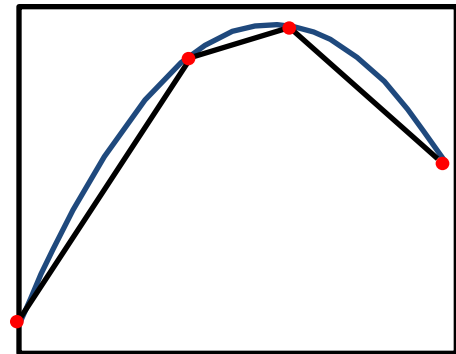
**Find:** Optimal polygonal approximation

**Example:** What is the optimal polygonal approximation of the blue curve with 3 segments ?



## Dynamic Programming Algorithm

- **Complexity:**  $O(P^2)$
- **P:** # points of the curve



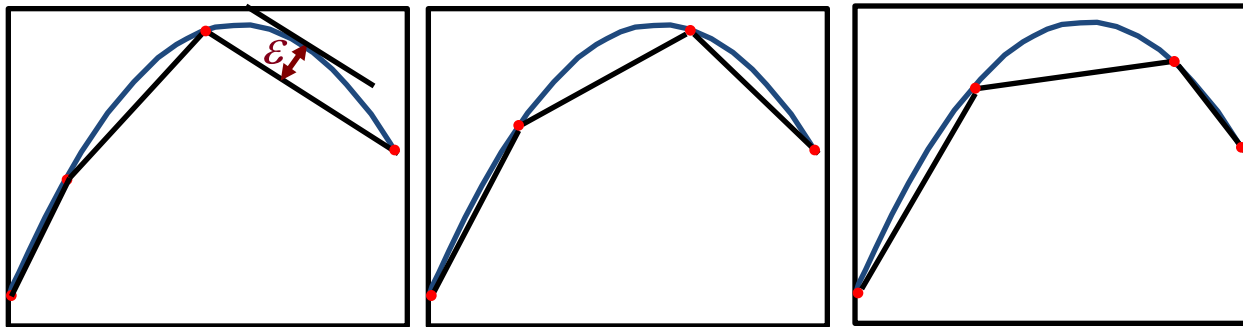


# Optimal Polygonal Approximation

**Given:** One nonlinear curve and desired # segments

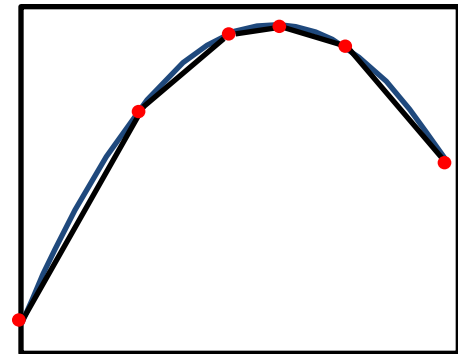
**Find:** Optimal polygonal approximation

**Example:** What is the optimal polygonal approximation of the blue curve with 3 segments ?



## Dynamic Programming Algorithm

- **Complexity:**  $O(P^2)$
- **P:** # points of the curve



# **Globally-Optimal Polygonal Approximation**

**Given:** Set of nonlinear curves and desired # of segments

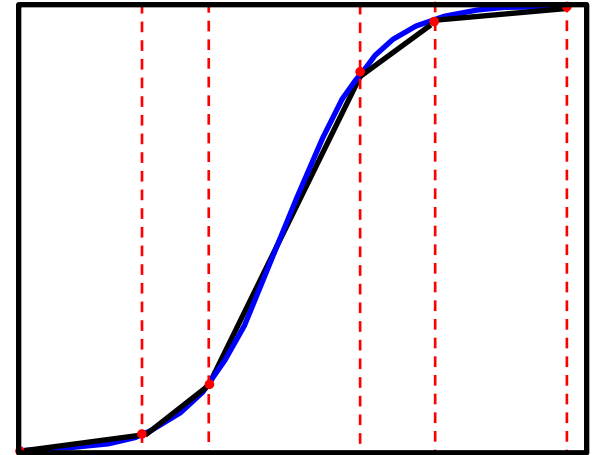
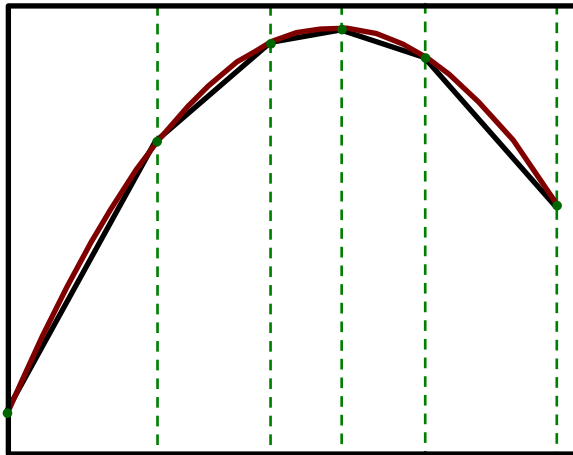
**Find:** Globally optimal polygonal approximation

# Globally-Optimal Polygonal Approximation

**Given:** Set of nonlinear curves and desired # of segments

**Find:** Globally optimal polygonal approximation

**Example:** What is the optimal polygonal approximation of the curves below with 5 segments ?

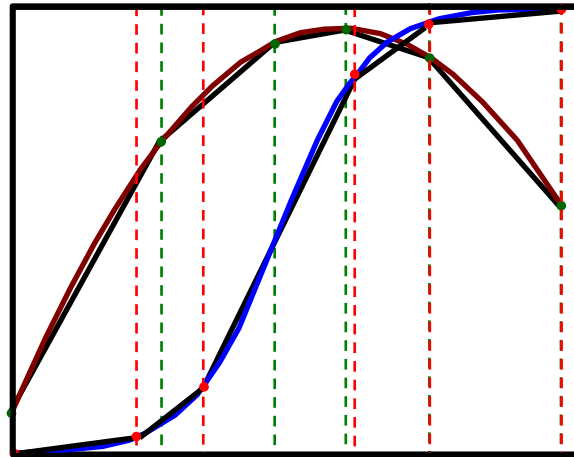


# Globally-Optimal Polygonal Approximation

**Given:** Set of nonlinear curves and desired # of segments

**Find:** Globally optimal polygonal approximation

**Example:** What is the optimal polygonal approximation of the curves below with 5 segments ?



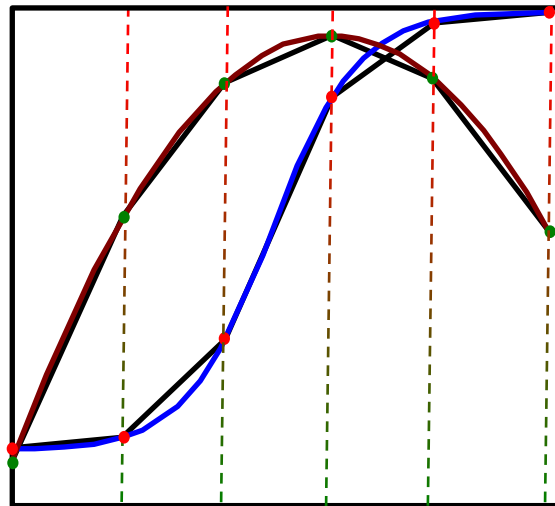
Combining the two we obtain 8 segments and not 5 segments

# Globally-Optimal Polygonal Approximation

**Given:** Set of nonlinear curves and desired # of segments

**Find:** Globally optimal polygonal approximation

**Example:** What is the optimal polygonal approximation of the curves below with 5 segments ?



**Solution:** modify the OPAA to minimize the maximum error of a set of curves simultaneously.

# Deriving the Piecewise Multi-Affine Model

$$(\theta_v \leq u < u_u)$$

$$\mathcal{I} = e + (u - \theta_v)(u_u - u)v g_{fi} + ws g_{si} - g_{so}(u)$$

$$\mathcal{K} = -v g_v^+$$

$$\mathcal{V} = -w g_w^+$$

$$\mathcal{S} = S^+(u, k_s, u_s, 0, 1) g_{s_2} - s g_{s_2}$$

$$u < \theta_v$$

$$u \geq \theta_v$$

$$\theta_w \leq u < \theta_v$$

$$\mathcal{I} = e + ws g_{si} - g_{so}(u)$$

$$\mathcal{K} = -v g_{v_2}^-$$

$$\mathcal{V} = -w g_w^+$$

$$\mathcal{S} = S^+(u, k_s, u_s, 0, 1) g_{s_2} - s g_{s_2}$$

$$\theta_o \leq u < \theta_w$$

$$\mathcal{I} = e - u g_{o_2}$$

$$\mathcal{K} = -v g_{v_2}^-$$

$$\mathcal{V} = (w_\infty^* - w) g_w^-(u)$$

$$\mathcal{S} = S^+(u, k_s, u_s) g_{s_1} - s g_{s_1}$$

$$u < \theta_o$$

$$u \geq \theta_o$$

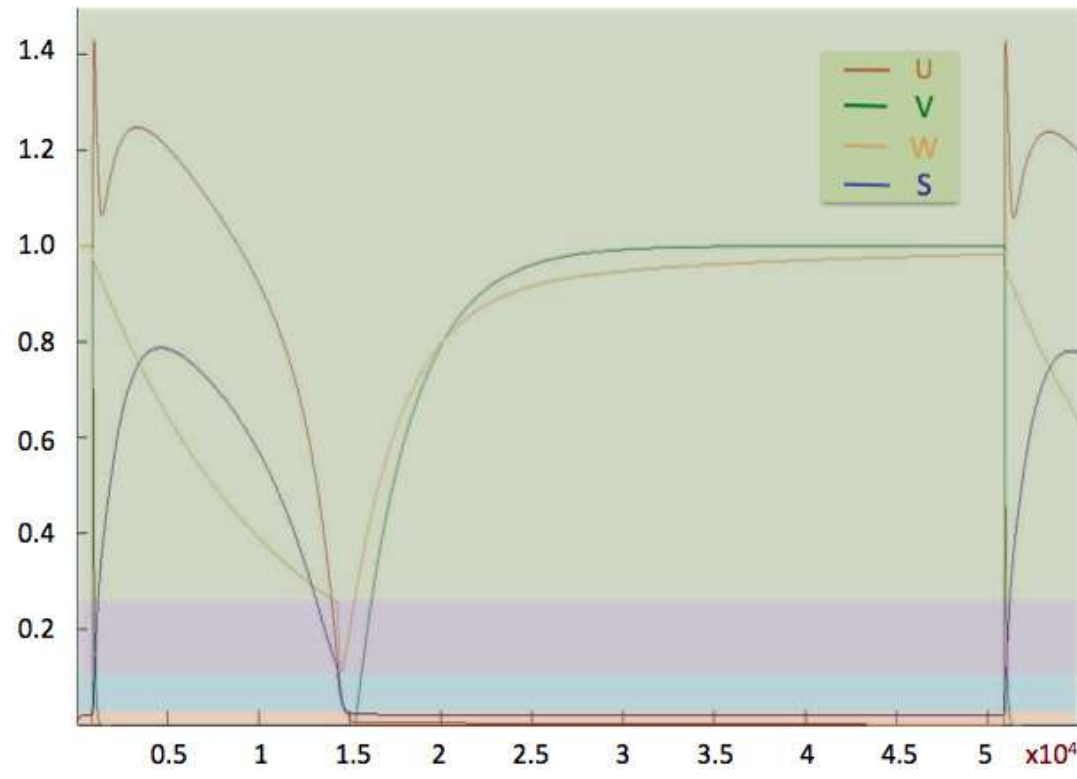
$$0 \leq u < \theta_o$$

$$\mathcal{I} = e - u g_{o_1}$$

$$\mathcal{K} = (1 - v) g_{v_1}^-$$

$$\mathcal{V} = (1 - u g_{w_\infty} - w) g_w^-(u)$$

$$\mathcal{S} = S^+(u, k_s, u_s) g_{s_1} - s g_{s_1}$$





# Deriving the Piecewise Multi-Affine Model

$$(\theta_v \leq u < u_u)$$

$$\mathfrak{K} = e + (u - \theta_v)(u_u - u)v g_{fi} + ws g_{si} - g_{so}(u)$$

$$\mathfrak{K} = -v g_v^+$$

$$\mathfrak{K} = -w g_w^+$$

$$\mathfrak{K} = S^+(u, k_s, u_s, 0, 1) g_{s_2} - s g_{s_2}$$

$$u < \theta_v$$

$$u \geq \theta_v$$

$$\theta_w \leq u < \theta_v$$

$$\mathfrak{K} = e + ws g_{si} - g_{so}(u)$$

$$\mathfrak{K} = -v g_{v_2}^-$$

$$\mathfrak{K} = -w g_w^+$$

$$\mathfrak{K} = S^+(u, k_s, u_s, 0, 1) g_{s_2} - s g_{s_2}$$

$$\theta_o \leq u < \theta_w$$

$$u < \theta_w$$

$$u \geq \theta_w$$

$$\mathfrak{K} = e - u g_{o_2}$$

$$\mathfrak{K} = -v g_{v_2}^-$$

$$\mathfrak{K} = (w_\infty^* - w) g_w^-(u)$$

$$\mathfrak{K} = S^+(u, k_s, u_s) g_{s_1} - s g_{s_1}$$

$$0 \leq u < \theta_o$$

$$u < \theta_o$$

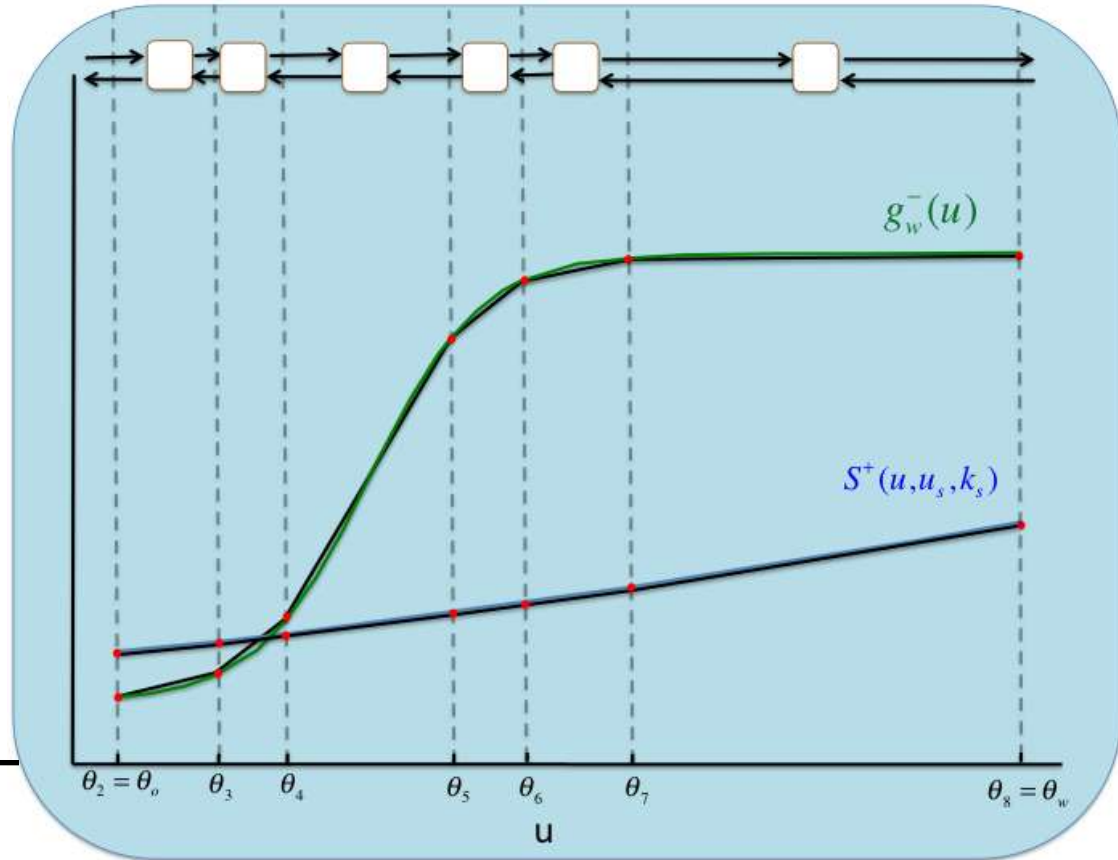
$$u \geq \theta_o$$

$$\mathfrak{K} = e - u g_{o_1}$$

$$\mathfrak{K} = (1 - v) g_{v_1}^-$$

$$\mathfrak{K} = (1 - u g_{w_\infty} - w) g_w^-(u)$$

$$\mathfrak{K} = S^+(u, k_s, u_s) g_{s_1} - s g_{s_1}$$





# Deriving the Piecewise Multi-Affine Model

$$(\theta_v \leq u < u_u)$$

$$\mathfrak{I} = e + (u - \theta_v)(u_u - u)v g_{fi} + ws g_{si} - g_{so}(u)$$

$$\mathfrak{I} = -v g_v^+$$

$$\mathfrak{I} = -w g_w^+$$

$$\mathfrak{I} = S^+(u, k_s, u_s) g_{s_2} - s g_{s_2}$$

$$u < \theta_v$$

$$u \geq \theta_v$$

$$\theta_w \leq u < \theta_v$$

$$\mathfrak{I} = e + ws g_{si} - g_{so}(u)$$

$$\mathfrak{I} = -v g_{v_2}^-$$

$$\mathfrak{I} = -w g_w^+$$

$$\mathfrak{I} = S^+(u, k_s, u_s) g_{s_2} - s g_{s_2}$$

$$\theta_o \leq u < \theta_w$$

$$\mathfrak{I} = e - u g_{o_2}$$

$$\mathfrak{I} = -v g_{v_2}^-$$

$$\mathfrak{I} = (w_\infty^* - w) g_w^-(u)$$

$$\mathfrak{I} = S^+(u, k_s, u_s) g_{s_1} - s g_{s_1}$$

$$u < \theta_w$$

$$u \geq \theta_w$$

$$0 \leq u < \theta_o$$

$$\mathfrak{I} = e - u g_{o_1}$$

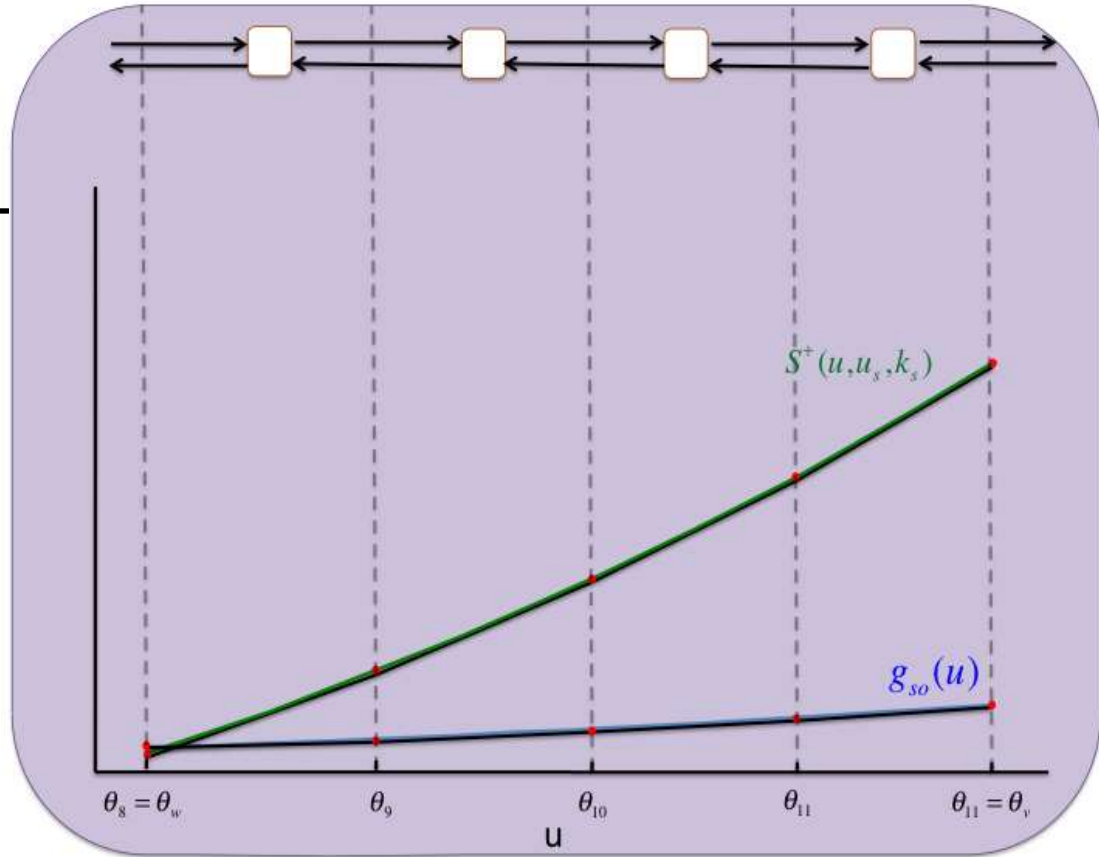
$$\mathfrak{I} = (1 - v) g_{v_1}^-$$

$$\mathfrak{I} = (1 - u g_{w_\infty} - w) g_w^-(u)$$

$$\mathfrak{I} = S^+(u, k_s, u_s) g_{s_1} - s g_{s_1}$$

$$u < \theta_o$$

$$u \geq \theta_o$$



# Deriving the Piecewise Multi-Affine Model

$(\theta_v \leq u < u_u)$

$$\mathfrak{L} = e + (u - \theta_v)(u_u - u)v g_{fi} + ws g_{si} - g_{so}(u)$$

$$\mathfrak{L} = -v g_v^+$$

$$\mathfrak{L} = -w g_w^+$$

$$\mathfrak{L} = S^+(u, k_s, u_s) g_{s_2} - s g_{s_2}$$

$\theta_w \leq u < \theta_v$

$$\mathfrak{L} = e + ws g_{si} - g_{so}(u)$$

$$\mathfrak{L} = -v g_{v_2}^-$$

$$\mathfrak{L} = -w g_w^+$$

$$\mathfrak{L} = S^+(u, k_s, u_s) g_{s_2} - s g_{s_2}$$

$\theta_o \leq u < \theta_w$

$$\mathfrak{L} = e - u g_{o_2}$$

$$\mathfrak{L} = -v g_{v_2}^-$$

$$\mathfrak{L} = (w_\infty^* - w) g_w^-(u)$$

$$\mathfrak{L} = S^+(u, k_s, u_s) g_{s_1} - s g_{s_1}$$

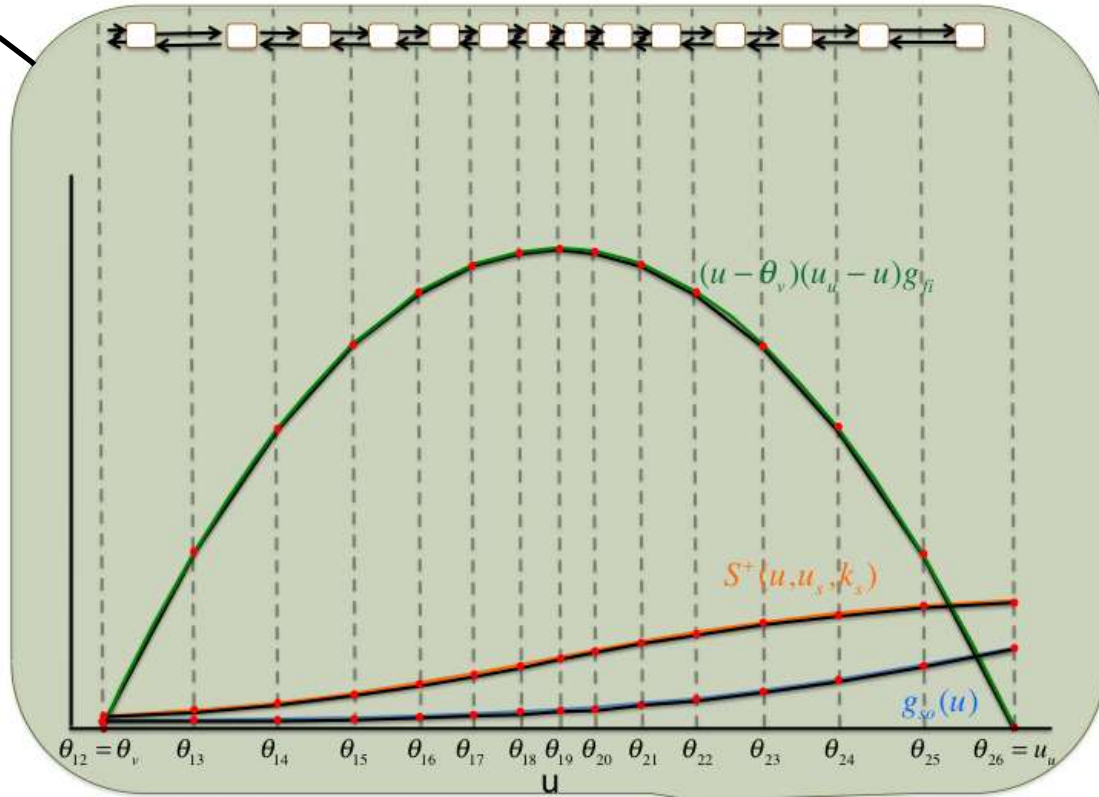
$0 \leq u < \theta_o$

$$\mathfrak{L} = e - u g_{o_1}$$

$$\mathfrak{L} = (1 - v) g_{v_1}^-$$

$$\mathfrak{L} = (1 - u g_{w_\infty} - w) g_w^-(u)$$

$$\mathfrak{L} = S^+(u, k_s, u_s) g_{s_1} - s g_{s_1}$$



# Deriving the Piecewise Multi-Affine Model

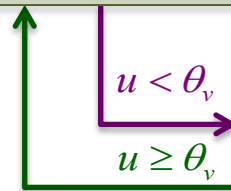
$$\theta_{12} = \theta_v < u \leq u_u = \theta_{26}$$

$$\mathfrak{R} = e + \sum_{i=12}^{25} R(u, \theta_i, \theta_{i+1}, u_{f_i}, u_{f_{i+1}}) v g_{f_i} + ws g_{s_i} - \sum_{i=12}^{25} R(u, \theta_i, \theta_{i+1}, u_{s_{o_i}}, u_{s_{o_{i+1}}}) g_{s_{o_i}}$$

$$\mathfrak{R} = -v g_v^+$$

$$\mathfrak{R} = -w g_w^+$$

$$\mathfrak{R} = \left( \sum_{i=12}^{25} R(u, \theta_i, \theta_{i+1}, u_{s_i}, u_{s_{i+1}}) - s \right) g_{s_2}$$



$$\theta_8 = \theta_w \leq u < \theta_v = \theta_{12}$$

$$\mathfrak{R} = e + ws g_{s_i} - \sum_{i=8}^{11} R(u, \theta_i, \theta_{i+1}, u_{s_{o_i}}, u_{s_{o_{i+1}}}) g_{s_{o_i}}$$

$$\mathfrak{R} = -v g_{v_2}^-$$

$$\mathfrak{R} = -w g_w^+$$

$$\mathfrak{R} = \left( \sum_{i=8}^{11} R(u, \theta_i, \theta_{i+1}, u_{s_i}, u_{s_{i+1}}) - s \right) g_{s_2}$$

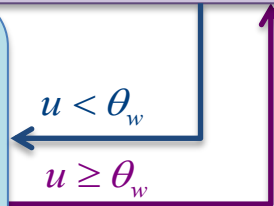
$$\theta_2 = \theta_o \leq u < \theta_w = \theta_8$$

$$\mathfrak{R} = e - u g_{o_2}$$

$$\mathfrak{R} = -v g_{v_2}^-$$

$$\mathfrak{R} = (w_\infty^* - w) \sum_{i=2}^7 R(u, \theta_i, \theta_{i+1}, u_{w_i}, u_{w_{i+1}}) g_{w_b}$$

$$\mathfrak{R} = \left( \sum_{i=2}^7 R(u, \theta_i, \theta_{i+1}, u_{s_i}, u_{s_{i+1}}) - s \right) g_{s_1}$$



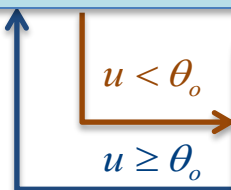
$$\theta_0 = 0 \leq u < \theta_o = \theta_2$$

$$\mathfrak{R} = e - u g_{o_1}$$

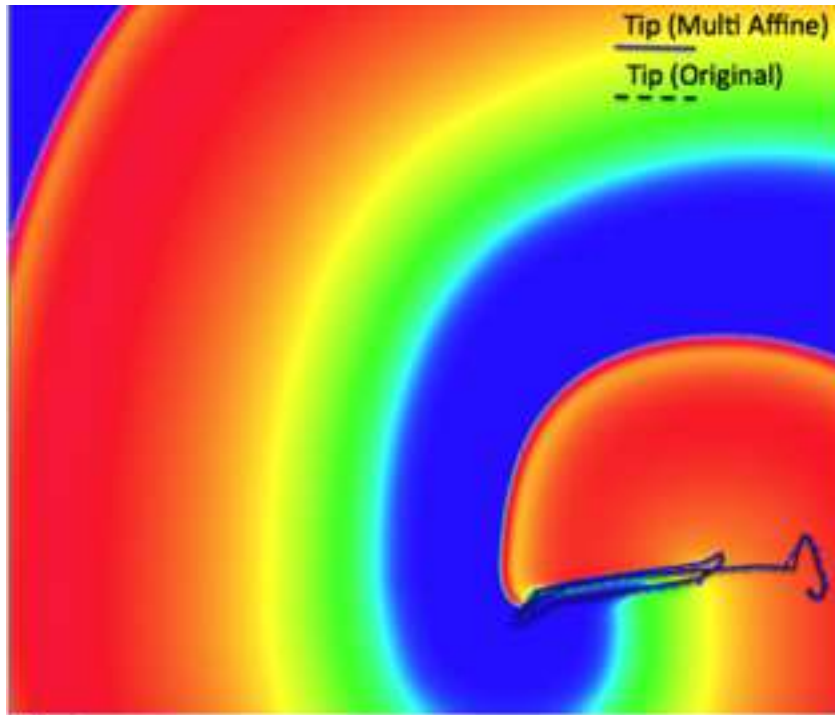
$$\mathfrak{R} = (1 - v) g_{v_1}^-$$

$$\mathfrak{R} = \left( \sum_{i=0}^1 (R(u, \theta_i, \theta_{i+1}, u_{w_i}^+, u_{w_{i+1}}^+) - w R(u, \theta_i, \theta_{i+1}, u_{w_i}^-, u_{w_{i+1}}^-)) \right) g_{w_a}$$

$$\mathfrak{R} = \left( \sum_{i=0}^1 R(u, \theta_i, \theta_{i+1}, u_{s_i}, u_{s_{i+1}}) - s \right) g_{s_1}$$

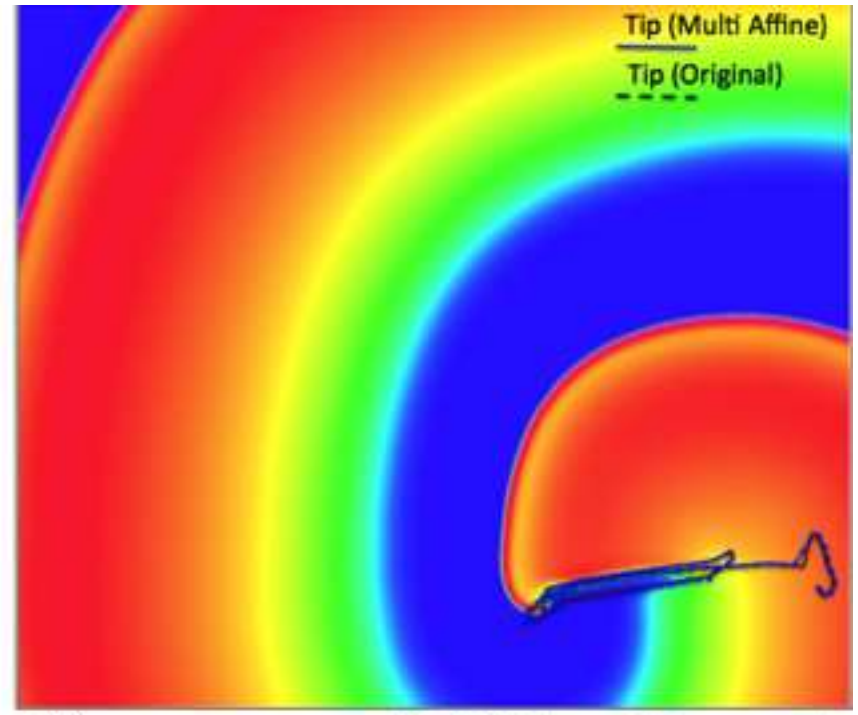


# 2D Comparison



(a)

Original MRM



(b)

Multi Affine (26 ramps)

# Analysis Problem

- Find parameter ranges reproducing non-excitability:
  - Restated as an LTL formula:  $G (u < \theta_v)$

# Analysis Problem

- Find parameter ranges reproducing non-excitability:
  - Restated as an LTL formula:  $G (u < \theta_v)$
- Initial region:

$$u \in [0, \theta_1] \quad v \in [0.95, 1] \quad w \in [0.95, 1] \quad s \in [0, 0.01]$$

# Analysis Problem

- Find parameter ranges reproducing non-excitability:

- Restated as an LTL formula:  $G (u < \theta_v)$

- Initial region:

$$u \in [0, \theta_1] \quad v \in [0.95, 1] \quad w \in [0.95, 1] \quad s \in [0, 0.01]$$

- Uncertain parameter ranges:

$$g_{o_1} \in [1, 180] \quad g_{o_2} \in [0, 10] \quad g_{si} \in [0.1, 100] \quad g_{so} \in [0.9, 50]$$

# Analysis Problem

- Find parameter ranges reproducing non-excitability:

- Restated as an LTL formula:  $G (u < \theta_v)$

- Initial region:

$$u \in [0, \theta_1] \quad v \in [0.95, 1] \quad w \in [0.95, 1] \quad s \in [0, 0.01]$$

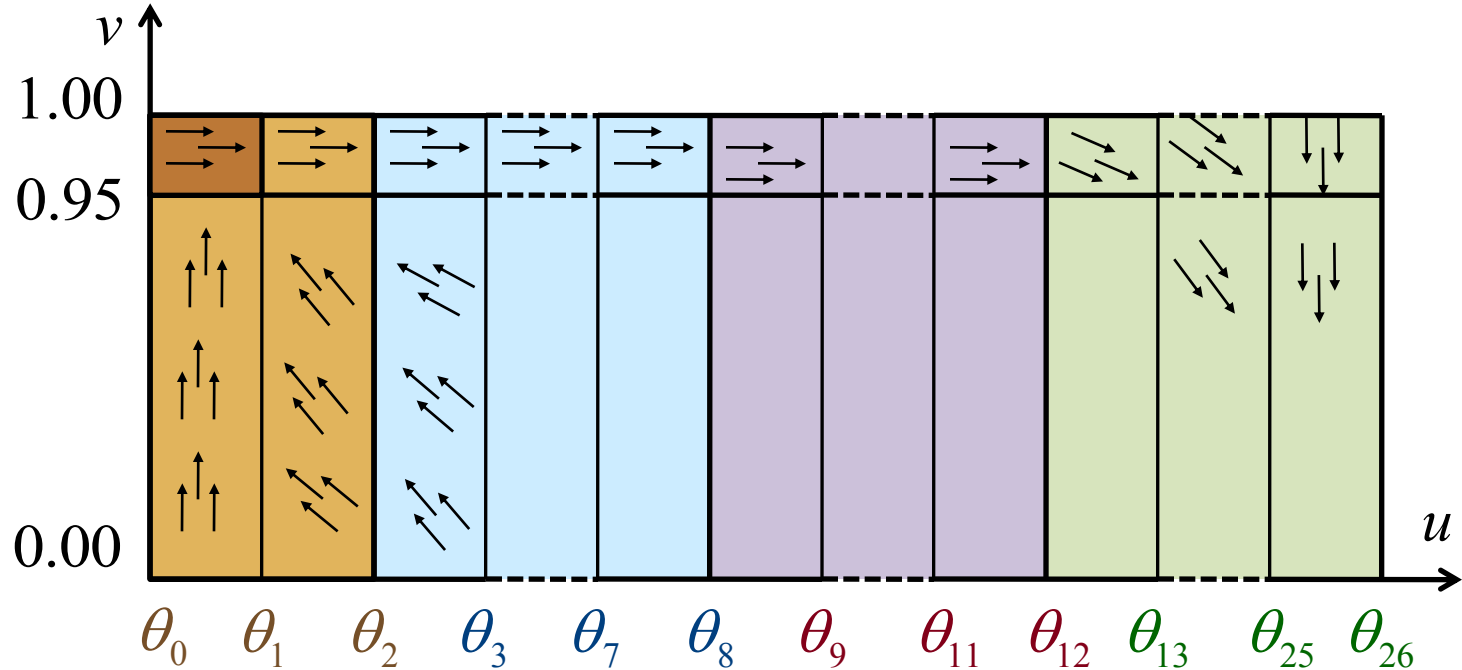
- Uncertain parameter ranges:

$$g_{o_1} \in [1, 180] \quad g_{o_2} \in [0, 10] \quad g_{si} \in [0.1, 100] \quad g_{so} \in [0.9, 50]$$

- Stimulus:  $e = 1$

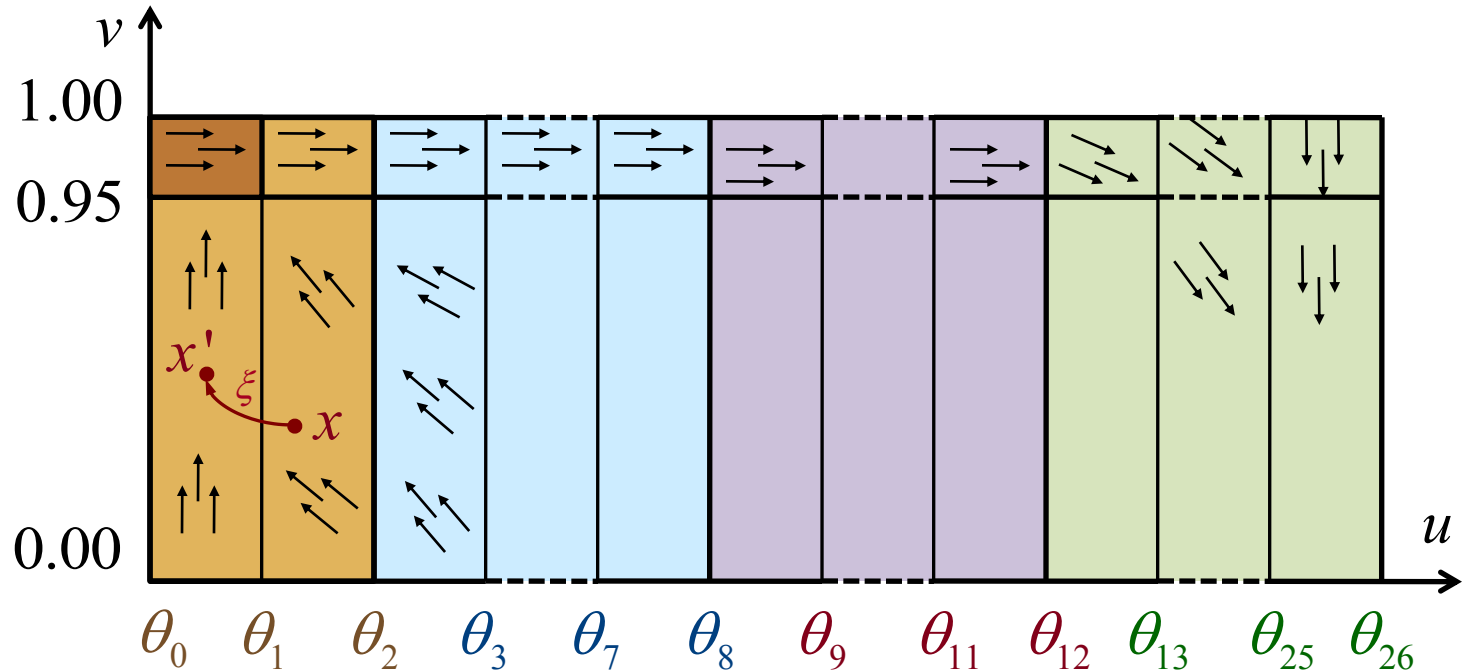


# State Space Partition



- **Hyperrectangles: 4 dimensional (uv-projection)**
  - **Arrows:** indicate the **vector field**

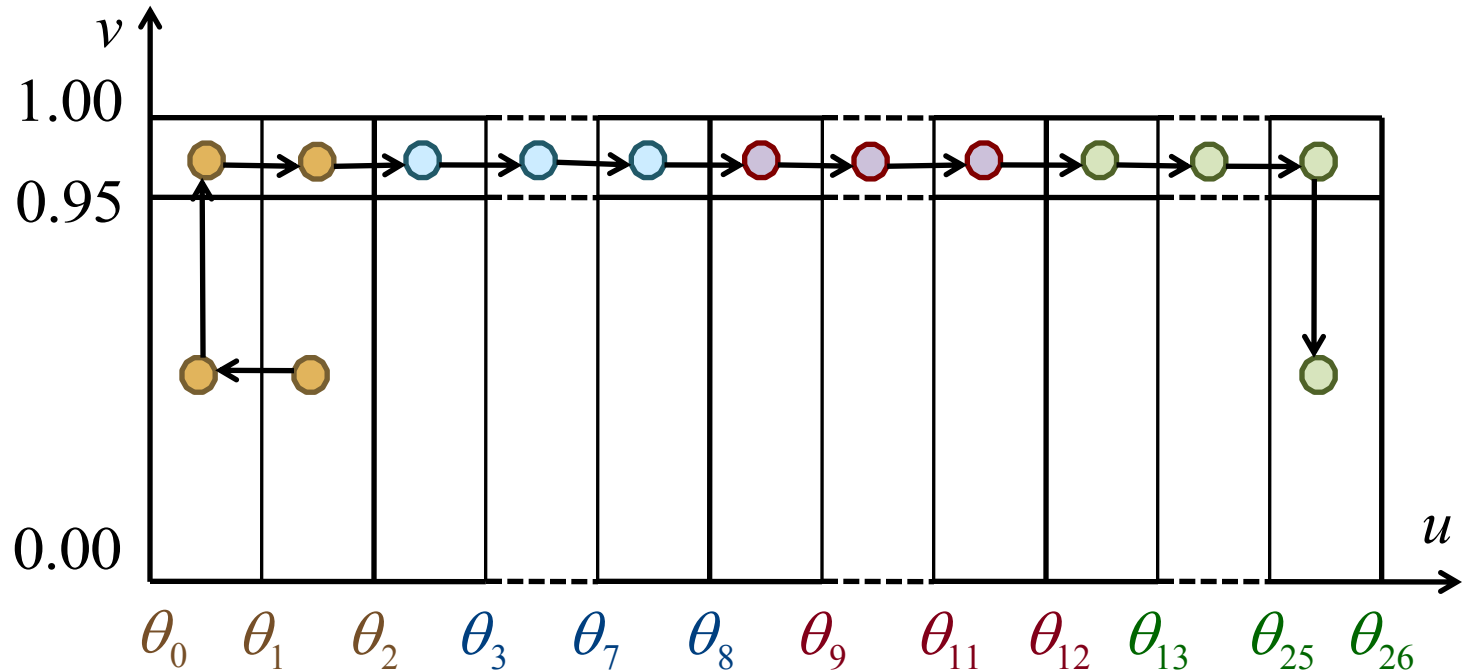
# Embedding Transition System $T_X(p)$



$x \xrightarrow{T_X(p)} x'$  **iff** there is a **solution**  $\xi$  and **time**  $\tau$  such that:

- $\xi(0) = x, \quad \xi(\tau) = x'$
- $\forall t \in [0, \tau]. \quad \xi(t) \in \text{rect}(x) \cup \text{rect}(x')$
- $\text{rect}(x)$  is adjacent to  $\text{rect}(x')$

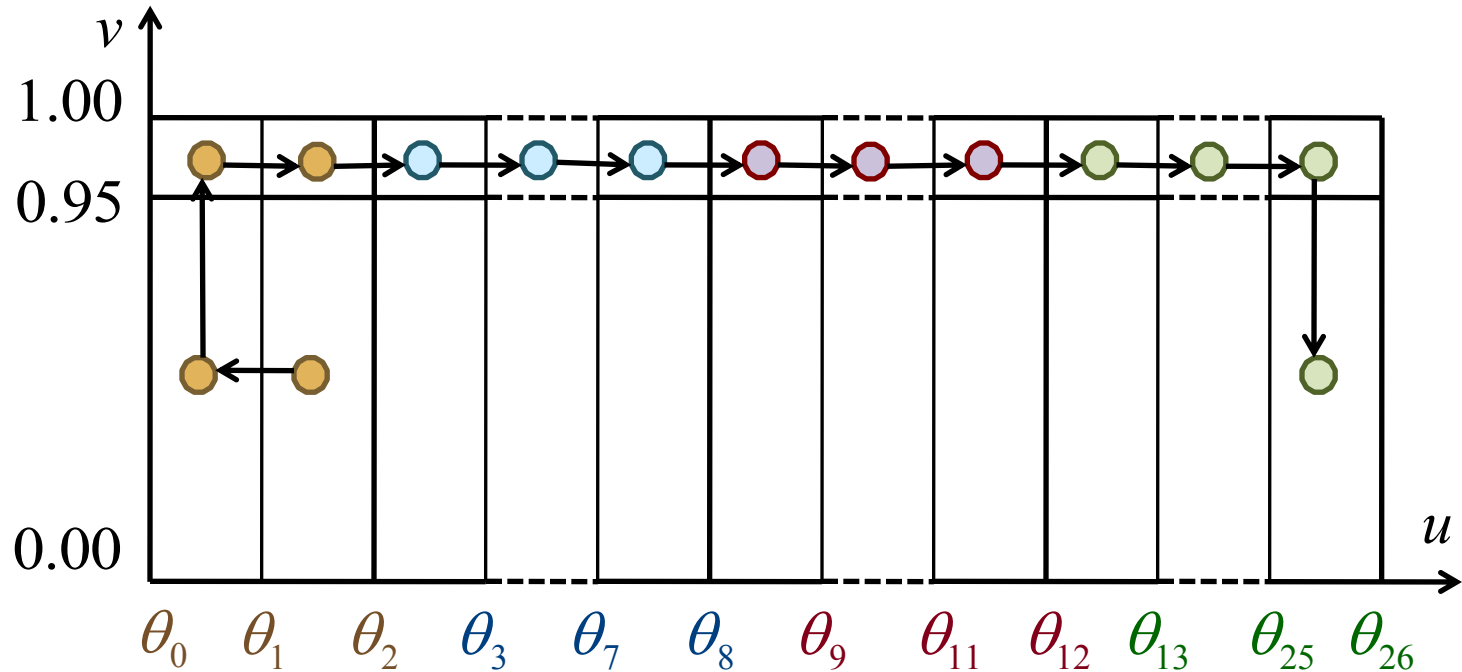
# The Discrete Abstraction $T_R(p)$



$$x :_{R(p)} x' \quad \text{iff} \quad \text{rect}(x) = \text{rect}(x')$$

$T_R(p)$  is the quotient of  $T_X(p)$  with respect to  $:_{R(p)}$

# The Discrete Abstraction $T_R(p)$

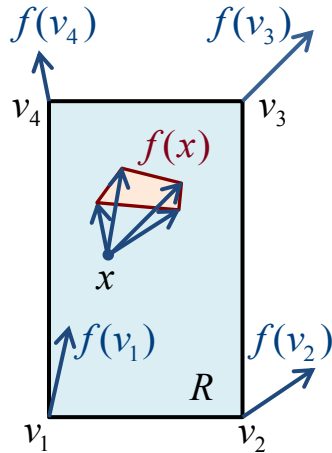


$$x :_{R(p)} x' \text{ iff } \mathit{rect}(x) = \mathit{rect}(x')$$

$T_R(p)$  is the quotient of  $T_X(p)$  with respect to  $:_{R(p)}$

**Theorem:**  $\forall p. T_X(p) \leq T_R(p)$

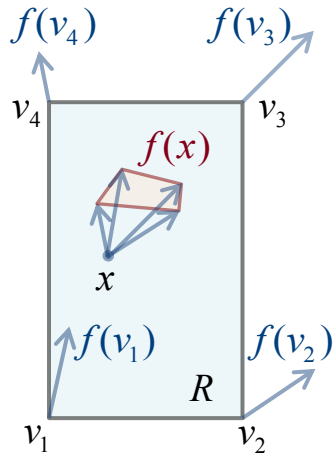
# Computing $T_R(p)$



**Theorem:** If  $f$  is multi-affine then

$$\forall x \in R. f(x) \in cHull(\{f(v) \mid v \in V_R\})$$

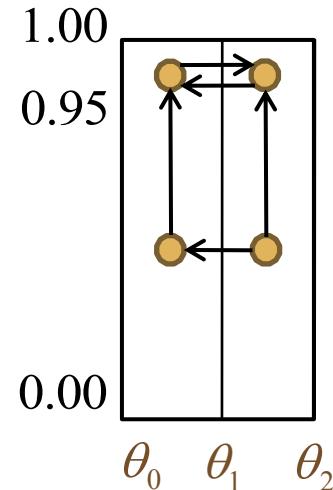
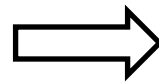
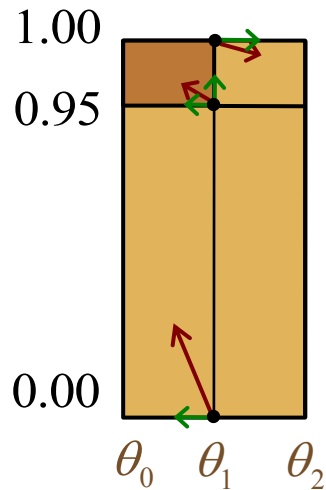
# Computing $T_R(p)$



**Theorem:** If  $f$  is multi-affine then

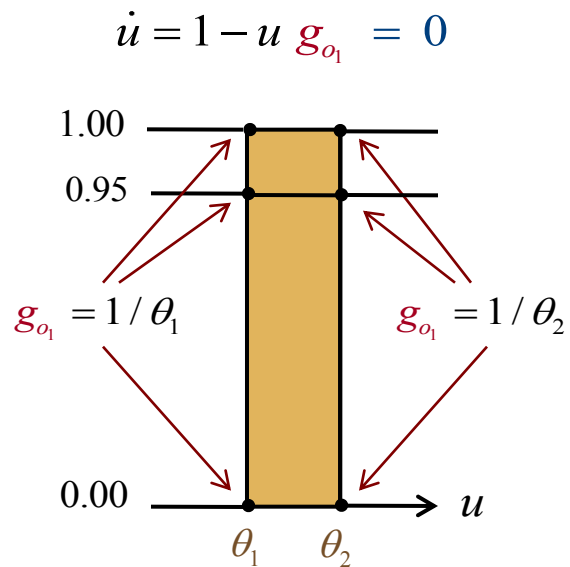
$$\forall x \in R. f(x) \in cHull(\{f(v) \mid v \in V_R\})$$

**Corollary:**



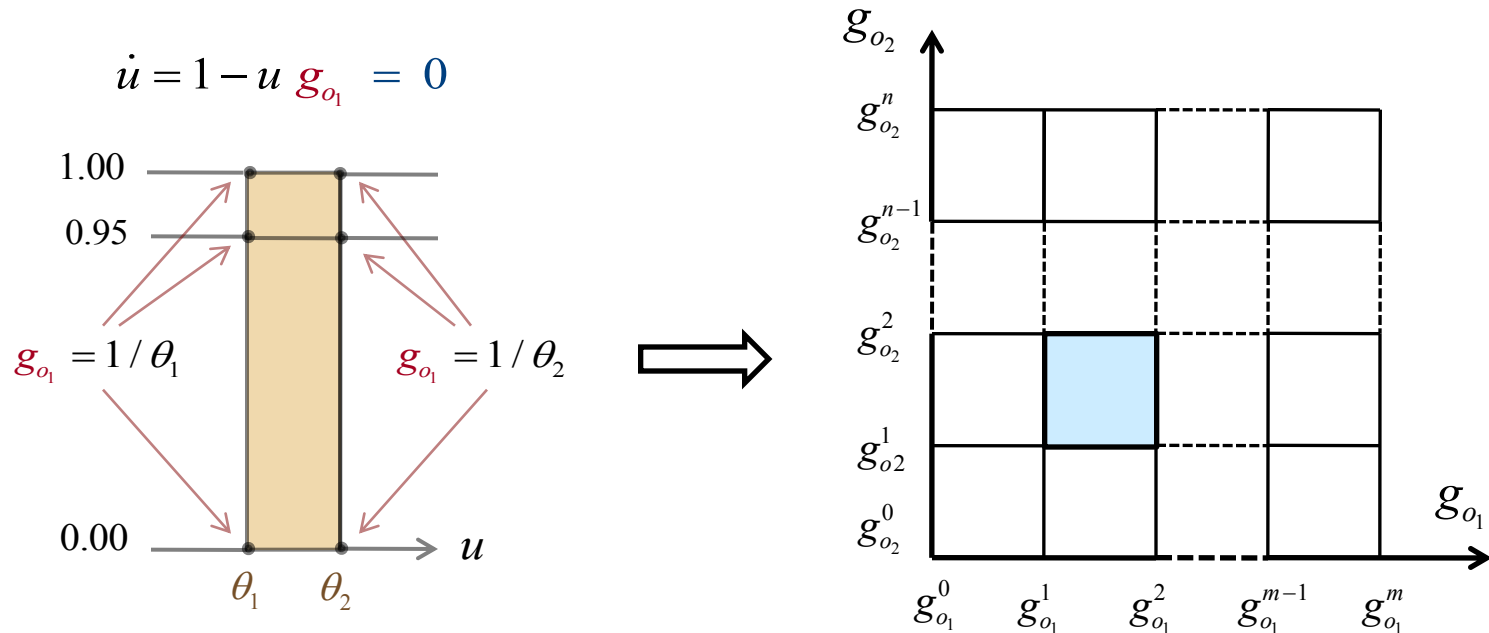
# Partitioning the Parameter Space

- **In each vertex:** affine equation in the parameters



# Partitioning the Parameter Space

- In each vertex: affine equation in the parameters

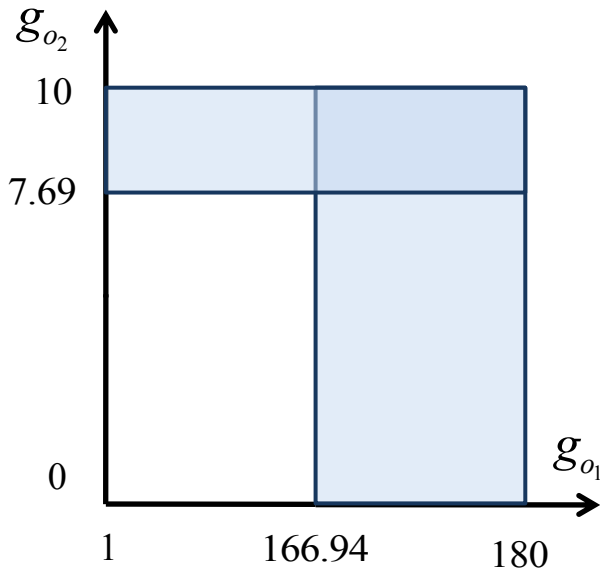


- Parameter space: 4 dimensional ( $g_{o_1}/g_{o_2}$  projection)
  - Each rectangle: a different transition system

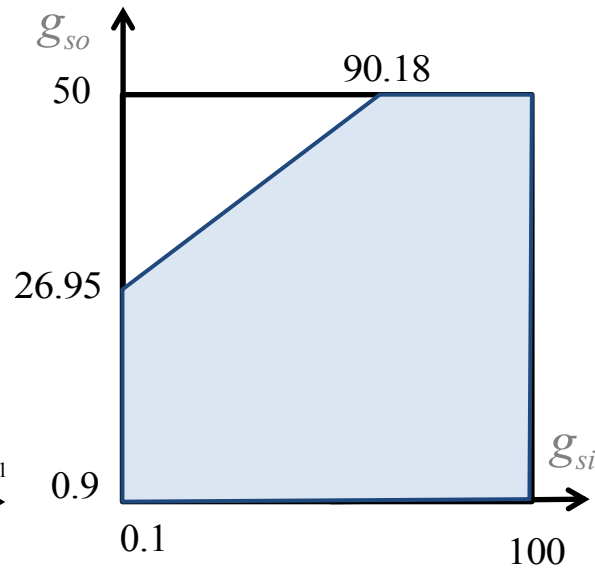


# Results

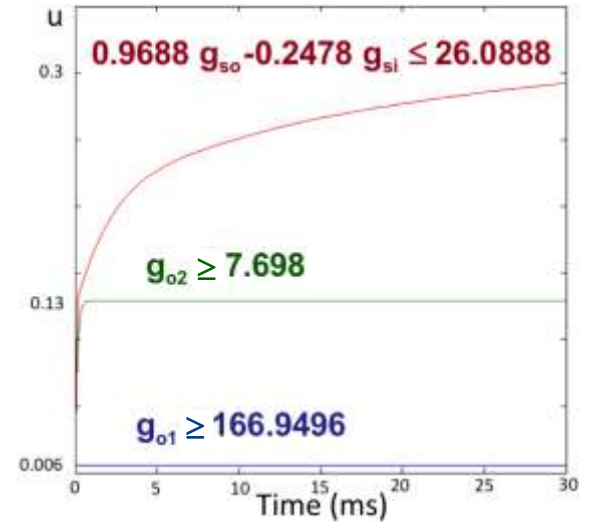
- **Rovertgene**: intelligently explores the PS rectangles



**independent**



**linearly dependent**



**simulation**

# Conclusions and Outlook

- **First automatic** parameter-range identification for **CC**
  - Validated both in **MCM** and **MRM**
  - Can be validated experimentally as for **ischemia**

# Conclusions and Outlook

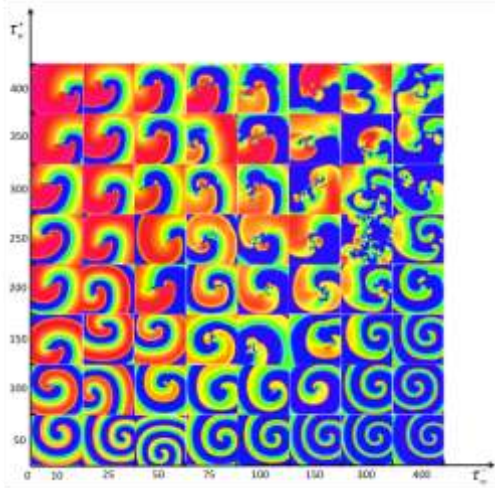
- **First automatic** parameter-range identification for **CC**
  - Validated both in **MCM** and **MRM**
  - Can be validated experimentally as for **ischemia**
- **Currently work** on time-dependent properties of **CC**
  - **Extend SpaceEx** with **RoverGene MA-techniques**

# Conclusions and Outlook

- **First automatic** parameter-range identification for **CC**
  - Validated both in **MCM** and **MRM**
  - Can be validated experimentally as for **ischemia**
- **Currently work** on time-dependent properties of **CC**
  - Extend SpaceEx with RoverGene MA-techniques
- **Moving towards 2D/3D** parameter-range identification
  - Use **PS** partitioning, simulation and curvature analysis

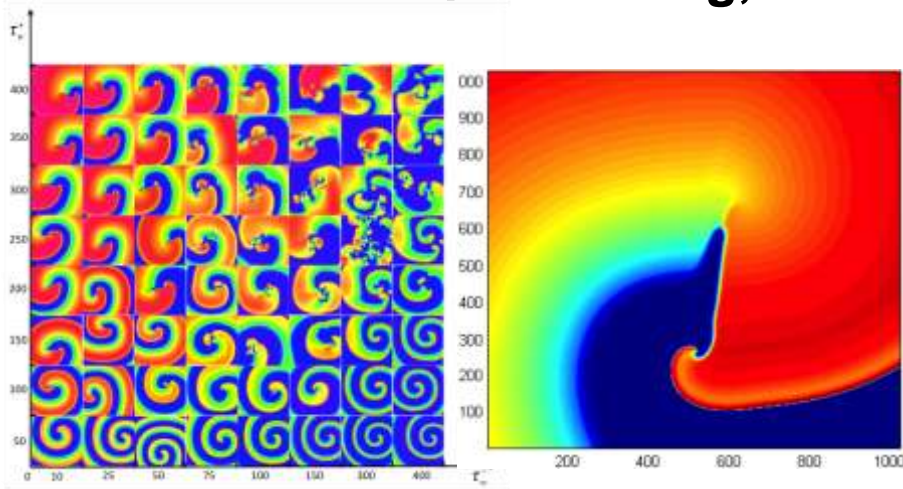
# Conclusions and Outlook

- **First automatic** parameter-range identification for CC
  - Validated both in **MCM** and **MRM**
  - Can be validated experimentally as for **ischemia**
- **Currently work** on time-dependent properties of CC
  - Extend SpaceEx with RoverGene MA-techniques
- **Moving towards 2D/3D** parameter-range identification
  - Use PS partitioning, simulation and curvature analysis



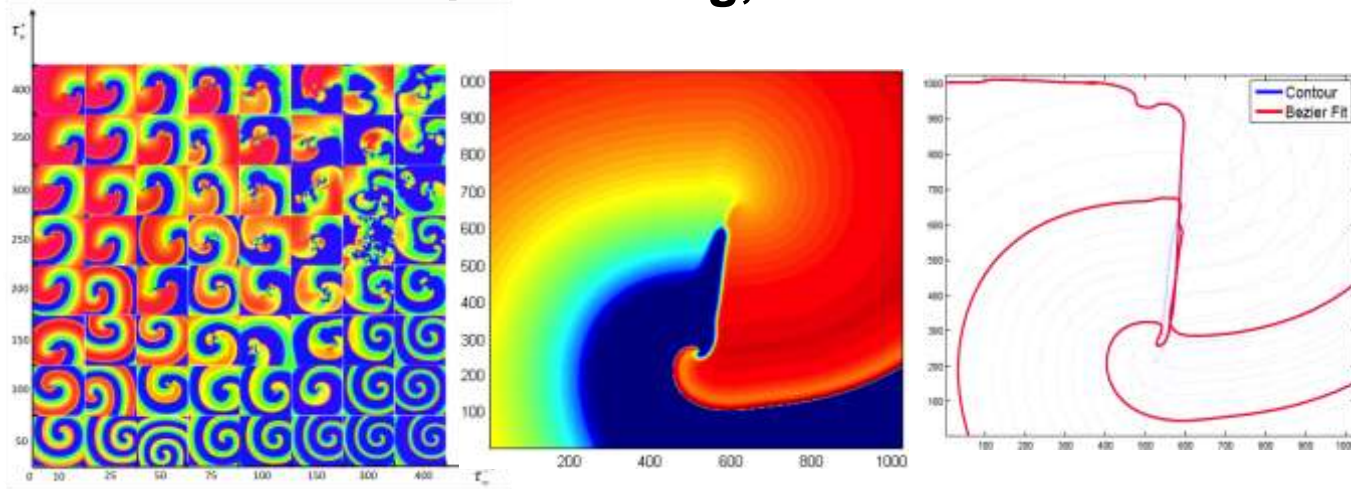
# Conclusions and Outlook

- **First automatic** parameter-range identification for CC
  - Validated both in **MCM** and **MRM**
  - Can be validated experimentally as for **ischemia**
- **Currently work** on time-dependent properties of CC
  - Extend SpaceEx with RoverGene MA-techniques
- **Moving towards 2D/3D** parameter-range identification
  - Use PS partitioning, simulation and curvature analysis



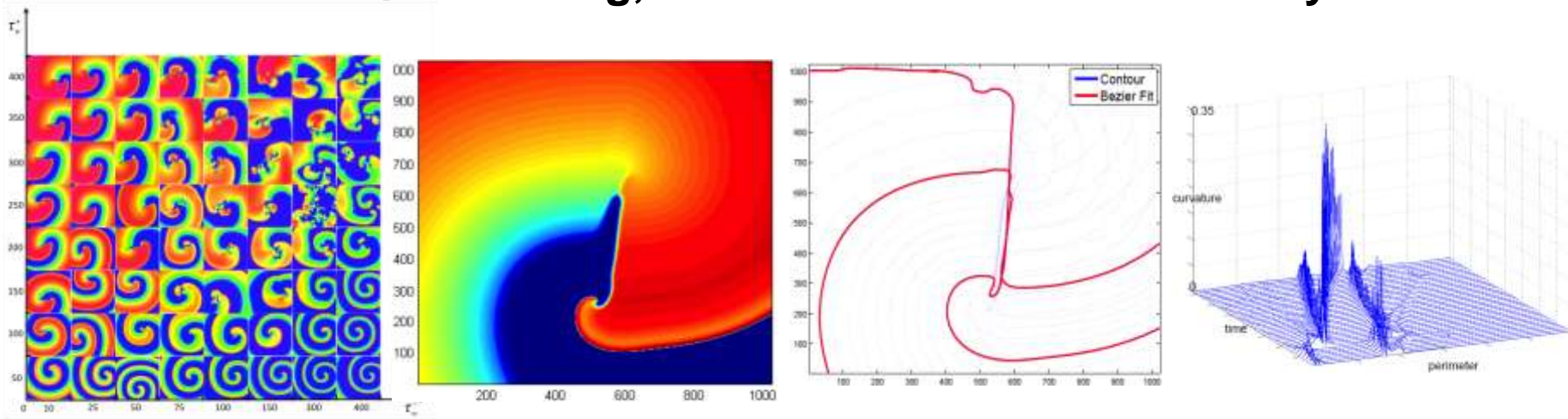
# Conclusions and Outlook

- **First automatic** parameter-range identification for CC
  - Validated both in **MCM** and **MRM**
  - Can be validated experimentally as for **ischemia**
- **Currently work** on time-dependent properties of CC
  - Extend SpaceEx with RoverGene MA-techniques
- **Moving towards 2D/3D** parameter-range identification
  - Use PS partitioning, simulation and curvature analysis



# Conclusions and Outlook

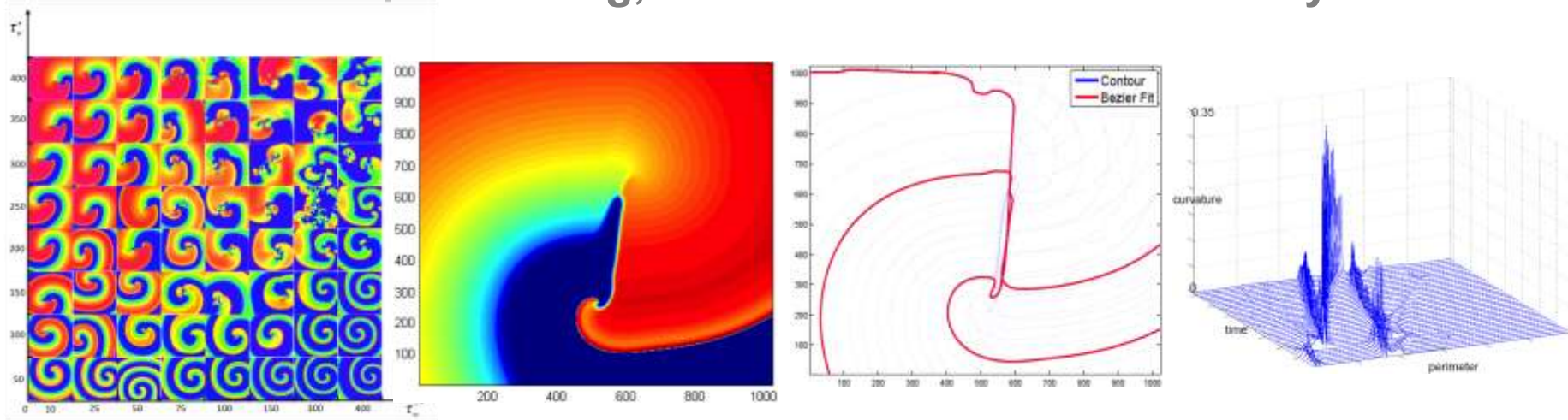
- **First automatic** parameter-range identification for CC
  - Validated both in **MCM** and **MRM**
  - Can be validated experimentally as for **ischemia**
- **Currently work** on time-dependent properties of CC
  - Extend SpaceEx with RoverGene MA-techniques
- **Moving towards 2D/3D** parameter-range identification
  - Use PS partitioning, simulation and curvature analysis





# Conclusions and Outlook

- **First automatic** parameter-range identification for CC
  - Validated both in **MCM** and **MRM**
  - Can be validated experimentally as for **ischemia**
- **Currently work** on time-dependent properties of CC
  - Extend SpaceEx with RoverGene MA-techniques
- **Moving towards 2D/3D** parameter-range identification
  - Use PS partitioning, simulation and curvature analysis



- **Derive the MRM** from Iyer model through TS abstraction